



Price list

September 1st 2023

Prices in EURO €

Content

Duct heaters - electric

Page 3	Circular
Page 4	Circular
Page 5	Circular
Page 6	Circular
Page 6 -7	Rectangular
Page 10-11	Accessories

Modell

CV -MQU / -MQEM / -MQXL
CV - MTU / -MTEM / -MTXL
CV - M / -ML / -E
CV - PTU / -PTEM / -PTXL / -P
VFL / VFLPG / VTL / VRA

Duct heaters / Duct coolers

Page 8	Circular duct heater for hot water	CWW
Page 8	Circular duct heater for hot water	CFW
Page 8	Rectangular duct heater for hot water	PGV
Page 9	Circular duct cooler for cooled water	CWK
Page 9	Circular duct cooler for cooled water	CFK
Page 9	Rectangular duct cooler for cooled water	PGK
Page 10	Circular DX batteries for cooling/heating	CWDX
Page 10	Rectangular DX batteries for cooling/heating	PGDX
Page 10	Accessories - droplet eliminator	DE
Page 10-12	Accessories - others	

Fan heaters - electric

Page 12	Portable/wall mounted for demanding enviroments	ROBUST
Page 13	Wall mounted for permanent heating	EA
Page 13	Wall mounted for permanent heating	ENV-L
Page 13	Portable/wall mounted for temporary heating	BX
Page 13	Portable for temporary heating	KX2

Fan heaters / coolers

Page 14	For demanding environments	AW C/CE
Page 14	Wall mounted	AW
Page 15	Ceiling mounted	CAW
Page 15	Wall mounted, direct expansion	AW DX
Page 15	Wall mounted, cold water	AW K
Page 15	Accessories	

Dehumidifiers

Page 16	For professional use	LAF 51
Page 16	For basements, water damages etc	LAF 31
Page 16	For domestic use	LAF 13

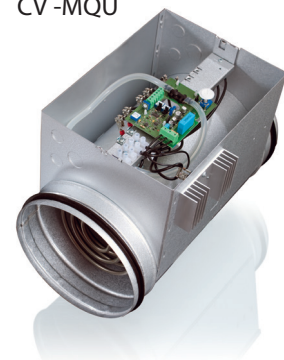
Terms of sales

Page 20	Terms of sales
---------	----------------

Electric duct heater CV -MQU / -MQEM / -MQXL (built-in temperature regulator and electronic air flow monitor)

Type	Power W	Voltage V	For external or internal temperature setting		For external temp. set- ting min/max limitation		For external 0...10V control signal.	
			Model -MQU**		Model -MQEM***		Model -MQXL	
			Art. No.	Price	Art. No.	Price	Art. No.	Price
CV 10-04-1_	400	230V~	200301	400	200201	428	200501	558
CV 10-06-1_	600	230V~	200302	407	200202	436	200502	563
CV 12-03-1_	300	230V~	200303	411	200203	443	200503	567
CV 12-06-1_	600	230V~	200304	428	200204	460	200504	587
CV 12-09-1_	900	230V~	200305	449	200205	478	200505	606
CV 12-12-1_	1200	230V~	200306*	458	200206	490	200506	617
CV 12-15-1_	1500	230V~	200307	476	200207	510	200507	633
CV 12-18-1_	1800	230V~	200308	499	200208	529	200508	657
CV 16-03-1_	300	230V~	200309	427	200209	459	200509	585
CV 16-06-1_	600	230V~	200310	427	200210	459	200510	585
CV 16-09-1_	900	230V~	200311*	450	200211	480	200511	610
CV 16-12-1_	1200	230V~	200312	467	200212	497	200512	624
CV 16-15-1_	1500	230V~	200313	472	200213	519	200513	627
CV 16-18-1_	1800	230V~	200314	472	200214	519	200514	627
CV 16-21-1_	2100	230V~	200315*	481	200215	516	200515	642
CV 16-27-1_	2700	230V~	200316	513	200216	542	200516	670
CV 16-33-2_	3300	400V2~	200317	535	200217	566	200517	694
CV 16-50-2_	5000	400V2~	200318	606	200218	637	200518	763
CV 16-50-3_	5000	400V3~	200319	873	200219	873	200519	999
CV 20-06-1_	600	230V~	200320	452	200220	481	200520	612
CV 20-09-1_	900	230V~	200321	470	200221	500	200521	626
CV 20-12-1_	1200	230V~	200322	470	200222	500	200522	626
CV 20-15-1_	1500	230V~	200323	491	200223	521	200523	648
CV 20-18-1_	1800	230V~	200324	491	200224	521	200524	648
CV 20-21-1_	2100	230V~	200325*	496	200225	524	200525	653
CV 20-30-1_	3000	230V~	200326	545	200226	577	200526	704
CV 20-30-2_	3000	400V2~	200327	545	200227	577	200527	704
CV 20-50-2_	5000	400V2~	200328*	622	200228	653	200528	780
CV 20-60-2_	6000	400V2~	200329	653	200229	653	200529	811
CV 20-60-3_	6000	400V3~	200330	920	200230	920	200530	1 049
CV 25-06-1_	600	230V~	200331	476	200231	510	200531	633
CV 25-09-1_	900	230V~	200332	499	200232	529	200532	657
CV 25-12-1_	1200	230V~	200333	499	200233	529	200533	657
CV 25-15-1_	1500	230V~	200334	517	200234	546	200534	674
CV 25-18-1_	1800	230V~	200335	517	200235	546	200535	674
CV 25-21-1_	2100	230V~	200336*	528	200236	560	200536	687
CV 25-30-1_	3000	230V~	200337*	560	200237	590	200537	716
CV 25-30-2_	3000	400V2~	200338	560	200238	590	200538	716
CV 25-50-2_	5000	400V2~	200339	637	200239	669	200539	795
CV 25-60-2_	6000	400V2~	200340*	669	200240	698	200540	822
CV 25-60-3_	6000	400V3~	200342	933	200242	933	200542	1 059
CV 25-90-3_	9000	400V3~	200343	995	200243	995	200543	1 122
CV 25-120-3_	12000	400V3~	200344	1 146	200244	1 146	200544	1 272
CV 31-09-1_	900	230V~	200345	520	200245	552	200545	677
CV 31-12-1_	1200	230V~	200346	520	200246	552	200546	677
CV 31-15-1_	1500	230V~	200347	542	200247	572	200547	693
CV 31-18-1_	1800	230V~	200348	542	200248	572	200548	693
CV 31-21-1_	2100	230V~	200349	545	200249	577	200549	704
CV 31-30-1_	3000	230V~	200350	572	200250	605	200550	731
CV 31-30-2_	3000	400V2~	200351	572	200251	605	200551	731
CV 31-50-2_	5000	400V2~	200352	649	200252	681	200552	806
CV 31-60-2_	6000	400V2~	200353*	680	200253	708	200553	838
CV 31-60-3_	6000	400V3~	200355	945	200255	946	200555	1 074
CV 31-90-3_	9000	400V3~	200356*	1 011	200256	1 011	200556	1 139
CV 31-120-3_	12000	400V3~	200357	1 161	200257	1 161	200557	1 288
CV 40-30-1_	3000	230V~	200360	587	200260	619	200560	745
CV 40-30-2_	3000	400V2~	200361	587	200261	619	200561	745
CV 40-50-2_	5000	400V2~	200362	662	200262	694	200562	820
CV 40-60-2_	6000	400V2~	200363	694	200263	726	200563	854
CV 40-60-3_	6000	400V3~	200365	964	200265	964	200565	1 089
CV 40-90-3_	9000	400V3~	200366	1 026	200266	1 026	200566	1 153
CV 40-120-3_	12000	400V3~	200367	1 183	200267	1 183	200567	1 311
CV 40-150-3_	15000	400V3~	200373	1 334	200294	1 334	200564	1 462

CV -MQU



* = Available from stock.

**=For model -MQU external sensor is required.

***=For model -MQEM external setting and sensor are required.

All models, except -MQU and -MTU, can be manufactured in protection class IP55 at an additional cost of EUR 71,-/heater.

Models -MQU and MQEM can be equipped with a relay with potential free alarm contact to indicate when the manual reset overheat protector is activated. Additional cost 122 Euro.

Electric duct heater CV -MTU / -MTEM / - MTXL (built-in temp. regulator)

Type	Power W	Voltage V	For external or internal temperature setting Model -MTU**		For external temp. set- ting min/max limitation Model -MTEM***		For external 0...10V control signal. Model -MTXL	
			Art. No.	Price	Art. No.	Price	Art. No.	Price
CV 10-04-1	400	230V~	208301	277	208201	310	208501	437
CV 10-06-1	600	230V~	208302	285	208202	316	208502	443
CV 12-03-1	300	230V~	208303	291	208203	321	208503	448
CV 12-06-1	600	230V~	208304	310	208204	342	208504	468
CV 12-09-1	900	230V~	208305	326	208205	359	208505	487
CV 12-12-1	1200	230V~	208306	337	208206	369	208506	496
CV 12-15-1	1500	230V~	208307	357	208207	387	208507	516
CV 12-18-1	1800	230V~	208308	379	208208	410	208508	536
CV 16-03-1	300	230V~	208309	308	208209	340	208509	466
CV 16-06-1	600	230V~	208310	308	208210	340	208510	466
CV 16-09-1	900	230V~	208311	328	208211	361	208511	490
CV 16-12-1	1200	230V~	208312	346	208212	377	208512	502
CV 16-15-1	1500	230V~	208313	352	208213	399	208513	509
CV 16-18-1	1800	230V~	208314	352	208214	399	208514	509
CV 16-21-1	2100	230V~	208315	362	208215	393	208515	522
CV 16-27-1	2700	230V~	208316	391	208216	422	208516	550
CV 16-33-2	3300	400V2~	208317	414	208217	447	208517	572
CV 16-50-2	5000	400V2~	208318	487	208218	517	208518	642
CV 16-50-3	5000	400V3~	208319	752	208219	752	208519	878
CV 20-06-1	600	230V~	208320	332	208220	362	208520	492
CV 20-09-1	900	230V~	208321	351	208221	380	208521	506
CV 20-12-1	1200	230V~	208322	351	208222	380	208522	506
CV 20-15-1	1500	230V~	208323	370	208223	403	208523	528
CV 20-18-1	1800	230V~	208324	370	208224	403	208524	528
CV 20-21-1	2100	230V~	208325	375	208225	407	208525	532
CV 20-30-1	3000	230V~	208326	424	208226	456	208526	583
CV 20-30-2	3000	400V2~	208327	424	208227	456	208527	583
CV 20-50-2	5000	400V2~	208328	500	208228	532	208528	659
CV 20-60-2	6000	400V2~	208329	532	208229	532	208529	690
CV 20-60-3	6000	400V3~	208330	800	208230	800	208530	928
CV 25-06-1	600	230V~	208331	357	208231	387	208531	516
CV 25-09-1	900	230V~	208332	379	208232	410	208532	536
CV 25-12-1	1200	230V~	208333	379	208233	410	208533	536
CV 25-15-1	1500	230V~	208334	394	208234	425	208534	556
CV 25-18-1	1800	230V~	208335	394	208235	425	208535	556
CV 25-21-1	2100	230V~	208336	409	208236	439	208536	566
CV 25-30-1	3000	230V~	208337	439	208237	472	208537	596
CV 25-30-2	3000	400V2~	208338	439	208238	472	208538	596
CV 25-50-2	5000	400V2~	208339	517	208239	549	208539	674
CV 25-60-2	6000	400V2~	208340	549	208240	579	208540	702
CV 25-60-3	6000	400V3~	208342	814	208242	814	208542	940
CV 25-90-3	9000	400V3~	208343	874	208243	874	208543	1 002
CV 25-120-3	12000	400V3~	208344	1 027	208244	1 027	208544	1 153
CV 31-09-1	900	230V~	208345	400	208245	431	208545	558
CV 31-12-1	1200	230V~	208346	400	208246	431	208546	558
CV 31-15-1	1500	230V~	208347	422	208247	452	208547	571
CV 31-18-1	1800	230V~	208348	422	208248	452	208548	571
CV 31-21-1	2100	230V~	208349	424	208249	456	208549	583
CV 31-30-1	3000	230V~	208350	452	208250	483	208550	611
CV 31-30-2	3000	400V2~	208351	452	208251	483	208551	611
CV 31-50-2	5000	400V2~	208352	529	208252	560	208552	687
CV 31-60-2	6000	400V2~	208353	559	208253	589	208553	718
CV 31-60-3	6000	400V3~	208355	823	208255	825	208555	951
CV 31-90-3	9000	400V3~	208356	891	208256	891	208556	1 019
CV 31-120-3	12000	400V3~	208357	1 039	208257	1 039	208557	1 169
CV 40-30-1	3000	230V~	208360	468	208260	498	208560	625
CV 40-30-2	3000	400V2~	208361	468	208261	498	208561	625
CV 40-50-2	5000	400V2~	208362	541	208262	572	208562	700
CV 40-60-2	6000	400V2~	208363	572	208263	605	208563	732
CV 40-60-3	6000	400V3~	208365	843	208265	843	208565	970
CV 40-90-3	9000	400V3~	208366	905	208266	905	208566	1 032
CV 40-120-3	12000	400V3~	208367	1 063	208267	1 063	208567	1 188
CV 40-150-3	15000	400V3~	208364	1 214	209984	1 214	208554	1 339



CV -MTU

All models, except -MQU and -MTU, can be manufactured in protection class IP55 at an additional cost of EUR 71,-/heater.

Model -MTU and MTEM can be equipped with a relay with potential free alarm contact to indicate when the manual reset overheat protector is activated. Additional cost 122 Euro.

**=For model -MTU external sensor is required.

***=For model -MTEM external setting and sensor are required.

Electric duct heater CV -M / -ML / -EL (ext. temperature regulator)

Type	Power	Voltage	Model -M up to 9000 W Model -E** for 12 000 W		Model -ML up to 9000 W Model -EL** for 12 000 W	
			Art. No.	Price	Art. No.	Price
	W	V				
CV 10-04-1_ ___	400	230V~	208001*	148	208101	199
CV 10-06-1_ ___	600	230V~	208002	152	208102	206
CV 12-03-1_ ___	300	230V~	208003	159	208103	211
CV 12-06-1_ ___	600	230V~	208004	175	208104	231
CV 12-09-1_ ___	900	230V~	208005*	197	208105	248
CV 12-12-1_ ___	1200	230V~	208006*	206	208106	257
CV 12-15-1_ ___	1500	230V~	208007	224	208107	277
CV 12-18-1_ ___	1800	230V~	208008	245	208108	299
CV 16-03-1_ ___	300	230V~	208009	175	208109	229
CV 16-06-1_ ___	600	230V~	208010	175	208110	229
CV 16-09-1_ ___	900	230V~	208011*	198	208111	252
CV 16-12-1_ ___	1200	230V~	208012	211	208112	267
CV 16-15-1_ ___	1500	230V~	208013	215	208113	272
CV 16-18-1_ ___	1800	230V~	208014	215	208114	272
CV 16-21-1_ ___	2100	230V~	208015*	231	208115	285
CV 16-27-1_ ___	2700	230V~	208016	258	208116	313
CV 16-33-2_ ___	3300	400V2~	208017	284	208117	336
CV 16-50-2_ ___	5000	400V2~	208018*	353	208118	408
CV 16-50-3_ ___	5000	400V3~	208019	353	208119	408
CV 20-06-1_ ___	600	230V~	208020	199	208120	252
CV 20-09-1_ ___	900	230V~	208021	222	208121	268
CV 20-12-1_ ___	1200	230V~	208022	222	208122	268
CV 20-15-1_ ___	1500	230V~	208023	240	208123	291
CV 20-18-1_ ___	1800	230V~	208024	240	208124	291
CV 20-21-1_ ___	2100	230V~	208025*	245	208125	293
CV 20-30-1_ ___	3000	230V~	208026	293	208126	346
CV 20-30-2_ ___	3000	400V2~	208027	293	208127	346
CV 20-50-2_ ___	5000	400V2~	208028*	366	208128	421
CV 20-60-2_ ___	6000	400V2~	208029	399	208129	451
CV 20-60-3_ ___	6000	400V3~	208030	399	208130	452
CV 25-06-1_ ___	600	230V~	208031	223	208131	277
CV 25-09-1_ ___	900	230V~	208032	245	208132	299
CV 25-12-1_ ___	1200	230V~	208033	245	208133	299
CV 25-15-1_ ___	1500	230V~	208034	264	208134	317
CV 25-18-1_ ___	1800	230V~	208035	264	208135	317
CV 25-21-1_ ___	2100	230V~	208036*	275	208136	328
CV 25-30-1_ ___	3000	230V~	208037	305	208137	360
CV 25-30-2_ ___	3000	400V2~	208038	305	208138	360
CV 25-50-2_ ___	5000	400V2~	208039	383	208139	437
CV 25-60-2_ ___	6000	400V2~	208040*	412	208140	468
CV 25-60-3_ ___	6000	400V3~	208042	412	208142	468
CV 25-90-3_ ___	9000	400V3~	208043	474	208143	528
CV 25-120-3_ ___	12000	400V3~	208644	535	208744**	587
CV 31-09-1_ ___	900	230V~	208045	265	208145	318
CV 31-12-1_ ___	1200	230V~	208046	265	208146	318
CV 31-15-1_ ___	1500	230V~	208047	283	208147	336
CV 31-18-1_ ___	1800	230V~	208048	283	208148	336
CV 31-21-1_ ___	2100	230V~	208049	293	208149	346
CV 31-30-1_ ___	3000	230V~	208050	320	208150	374
CV 31-30-2_ ___	3000	400V2~	208051	320	208151	374
CV 31-50-2_ ___	5000	400V2~	208052	396	208152	449
CV 31-60-2_ ___	6000	400V2~	208053*	424	208153	477
CV 31-60-3_ ___	6000	400V3~	208055	424	208155	477
CV 31-90-3_ ___	9000	400V3~	208056*	491	208156	541
CV 31-120-3_ ___	12000	400V3~	208657**	551	208757**	604
CV 40-30-1_ ___	3000	230V~	208060	334	208160	385
CV 40-30-2_ ___	3000	400V2~	208061	334	208161	385
CV 40-50-2_ ___	5000	400V2~	208062	410	208162	464
CV 40-60-2_ ___	6000	400V2~	208063	442	208163	496
CV 40-60-3_ ___	6000	400V3~	208065	442	208165	496
CV 40-90-3_ ___	9000	400V3~	208066	502	208166	558
CV 40-120-3_ ___	12000	400V3~	208667**	569	208767**	625
CV 40-150-3_ ___	15000	400V3~	208681**	638	208781**	693



CV -M

All models, except -MQU and -MTU, can be manufactured in protection class IP55 at an additional cost of EUR 71,-/heater.

* = Available from stock.

**= 12000W and 15000W manufactured as model CV_-120-3E / 3EL and CV-150-3E/3EL

Electric duct heater CV -PTU / -PTM / -PTXL / -P (for air velocity > 0,5m/s) 200 W - 1800 W

Type	Power W	Voltage V	For external or internal temperature setting Model -PTU**		For external temp.set- ting min/max limitation Model -PTM***		For external 0...10V control signal. Model -PTXL		For external control Model -P	
			Art. No.	Price	Art. No.	Price	Art. No.	Price	Art. No.	Price
CV 10-02-1_ _ _	200	230V~	209628	288	209678	316	209653	442	209603	158
CV 10-04-1_ _ _	400	230V~	209629	297	209679	323	209654	450	209604	167
CV 12-02-1_ _ _	200	230V~	209632	297	209682	323	209657	450	209607	167
CV 12-04-1_ _ _	400	230V~	209633	320	209683	351	209658	475	209608	194
CV 12-06-1_ _ _	600	230V~	209634	345	209684	373	209659	498	209609	213
CV 12-08-1_ _ _	800	230V~	209635	361	209685	388	209660	516	209610	233
CV 12-10-1_ _ _	1000	230V~	209636	384	209686	413	209661	539	209611	255
CV 12-12-1_ _ _	1200	230V~	209637	412	209687	442	209662	565	209612	284
CV 16-06-1_ _ _	600	230V~	209645	345	209695	373	209670	498	209620	213
CV 16-12-1_ _ _	1200	230V~	209646	378	209696	408	209671	532	209621	249
CV 16-18-1_ _ _	1800	230V~	209647	433	209697	460	209672	586	209622	303

All models, except -PTU, can be manufactured in protection class IP55 at an additional cost of EUR 71,-/heater.

**=For model -PTU external sensor is required.

***=For model -PTM external setting and sensor are required.

Electric duct heaters VFL / VFLPG / VTL / VRA



You will obtain the total price by adding the prices in the tables accordingly:

- Duct heater for external temperature control (A+B)

The total price will be obtained by adding the price for the frame, table A, with the price for all steps, table B.

Prices are valid for voltage 400V2~/400V3~.

For other supply voltage between 230V3~ and 500V3~ the prices in tabel B will be increased with 15%.

- Duct heater with built-in control (A+C)

The total price will be obtained by adding the price for the frame, table A, with the price for the total power, table C.

- Duct heater with built-in control and electronic air flow monitor (A+D)

The total price will be obtained by adding the price for the frame, table A, with the price for the total power, table D.

In addition to the price:

At degree of protection IP55 the prices in table A will increase with 50%.

At degree of protection IP65 the prices in table A will increase with 100%.

For loose counter flanges (2 pcs) the price in table A will increase with 25%.

Table A

Front area m ²	Price
-0.05	398
0.06-0.10	402
0.11-0.15	424
0.16-0.20	441
0.21-0.30	464
0.31-0.50	508
0.51-0.80	570
0.81-1.00	609
1.01-1.25	643
1.26-1.50	722
1.51-2.00	826
2.01-2.50	1 006
2.51-3.00	1 206
3.01-3.50	1 408
3.51-4.00	1 605
4.01-4.50	1 808
4.51-5.00	2 007
5.01-5.50	2 209
5.51-6.00	2 409

Table B - external control

Price /step		
Power kW	Price	
0.5	66	400V2~ (alt. 230V1~)
1.0	72	
1.5	97	
2.0	110	
2.5	116	
3.0	128	
3.5	133	
4.0	144	400V3~
4.5	147	
5.0	156	
5.5	167	
6.0	188	
6.5	199	
7.0	205	
7.5	218	
8.0	258	
9.0	271	
10.0	293	
11.0	308	
12.0	326	
13.0	344	
14.0	364	
15.0	410	
16.0	431	
17.0	445	
18.0	479	
20.0	532	
22.0	636	
24.0	682	
26.0	790	
28.0	815	
30.0	860	
32.0	915	
34.0	960	
36.0	1 002	
40.0	1 165	
43.0	1 240	

Electric duct heaters VFL / VFLPG / VTL / VRA

Table A

Front area m ²	Price
-0.05	398
0.06-0.10	402
0.11-0.15	424
0.16-0.20	441
0.21-0.30	464
0.31-0.50	508
0.51-0.80	570
0.81-1.00	609
1.01-1.25	643
1.26-1.50	722
1.51-2.00	826
2.01-2.50	1 006
2.51-3.00	1 206
3.01-3.50	1 408
3.51-4.00	1 605
4.01-4.50	1 808
4.51-5.00	2 007
5.01-5.50	2 209
5.51-6.00	2 409

Table C - built-in control

		Price / power					Price / power		
		400V			230V				
		Total power	MTEML / MTUL* Regulation: TG-sensor**	MTXL Regulation: 0...10V	Total power	MTEML / MTUL* Regulation: TG-sensor**	MTXL Regulation: 0...10V		
		kW	Price	Price	kW	Price	Price		
400V2~	1.5	474		579	1.5	474	579	230V~	
	2	479		592	2	479	592		
	3	516		619	3	516	619		
	5	540		647	5	825	965		
	6	836		935	6	1 026	1 166		
400V3~	7,5	877		975	7,5	1 117	1 283	230V3~	
	9	1 112		1 203	9	1 175	1 341		
	13	1 167		1 260	13	1 786	1 786		
	15	1 290		1 406	15	1 917	1 917		
	17	1 325		1 439	17	2 747	2 747		
	19	1 944		1 944	19	2 848	2 848		
	24	2 064		2 064	24	3 047	3 047		
	27	2 285		2 285	27	3 450	3 450		
	30	2 998		2 998	30	3 535	3 535		
	34	3 117		3 117	34	3 953	3 953		
	39	3 350		3 350	39	4 021	4 021		
	43	3 610		3 610	43	4 320	4 320		
	47	3 851		3 851	47	4 458	4 458		
	54	4 255		4 255	54	4 933	4 933		
	60	4 486		4 486	60	5 194	5 194		
	67,5	4 856		4 856	67,5	5 898	5 898		
	75	5 311		5 311	75	6 529	6 529		
	81	5 434		5 434	81	7 132 ***	7 132 ***		
	95	5 903		5 903	95	7 815 ***	7 815 ***		
	108	6 606		6 606	108	8 564 ***	8 564 ***		
	120	7 054		7 054	120	9 034 ***	9 034 ***		
	127	7 864		7 864	127	9 423 ***	9 423 ***		
	135	7 947		7 947	135	11 651 ****	11 651 ****		
	150	9 183 ***		9 183 ***	146	12 932 ****	12 932 ****		
	162	9 692 ***		9 692 ***	155	13 639 ****	13 639 ****		
	175	10 331 ***		10 331 ***	172	14 688 ****	14 688 ****		
	189	10 865 ***		10 865 ***	186	15 468 ****	15 468 ****		
	200	11 358 ***		11 358 ***	200	16 382 ****	16 382 ****		
	215	12 321 ****		12 321 ****	218	17 784 ****	17 784 ****		
	235	14 387 ****		14 387 ****	235	19 272 ****	19 272 ****		
	255	15 930 ****		15 930 ****	253	20 824 ****	20 824 ****		
	270	16 808 ****		16 808 ****					
	300	18 223 ****		18 223 ****					
	325	19 374 ****		19 374 ****					
	350	20 662 ****		20 662 ****					
380	22 357 ****		22 357 ****						
410	24 101 ****		24 101 ****						
440	24 685 ****		24 685 ****						

*= MTUL 400V3 max 215kW
MTUL 230V3 max 120kW

**= sensor is not included in the price.

***= manufactured for double power supplies

****= manufactured for four power supplies

Table A

Front area m ²	Price
-0.05	398
0.06-0.10	402
0.11-0.15	424
0.16-0.20	441
0.21-0.30	464
0.31-0.50	508
0.51-0.80	570
0.81-1.00	609
1.01-1.25	643
1.26-1.50	722
1.51-2.00	826

Table D - built-in control with electronic air flow monitor

		Price / power					
		400V			230V		
		Total power	MQEML / MQUL Regulation: TG-sensor**	MQXL Regulation: 0...10V	MQEML / MQUL Regulation: TG-sensor**	MQXL Regulation: 0...10V	
		kW	Price	Price	Price	Price	
400V2~	1.5	597		702	597	702	230V~
	2	604		716	604	716	
	3	638		743	638	743	
	5	664		770	948	1 088	
400V3~	6	962		1 061	1 149	1 320	230V3~
	7,5	1 002		1 099	1 242	1 405	
	9	1 235		1 328	1 297	1 466	
	13	1 290		1 383	1 909	1 909	
	15	1 416		1 531	2 043	2 043	
	17	1 448		1 563			
	19	2 068		2 068			
	24	2 194		2 194			
	27	2 411		2 411			

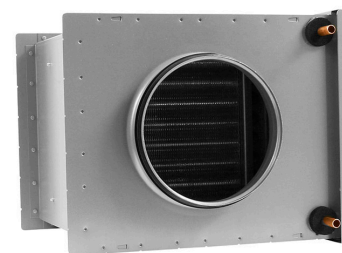
**= sensor is not included in the price.

***= manufactured for double power supplies

Duct heater for hot water

Duct heater CWW for hot water

Type	Size	No. of rows	Art. No.	Price
CWW 100-2-2,5	Ø 100	2	220000	264
CWW 100-3-2,5	Ø 100	3	220033	353
CWW 125-2-2,5	Ø 125	2	220001	275
CWW 125-3-2,5	Ø 125	3	220027	396
CWW 160-2-2,5	Ø 160	2	220002	301
CWW 160-3-2,5	Ø 160	3	220028	416
CWW 200-2-2,5	Ø 200	2	220003	322
CWW 200-3-2,5	Ø 200	3	220029	558
CWW 250-2-2,5	Ø 250	2	220004	434
CWW 250-3-2,5	Ø 250	3	220030	648
CWW 315-2-2,5	Ø 315	2	220005	506
CWW 315-3-2,5	Ø 315	3	220031	784
CWW 400-2-2,5	Ø 400	2	220006	595
CWW 400-3-2,5	Ø 400	3	220037	875
CWW 500-2-2,5	Ø 500	2	220007	802



CWW

Ductheater CFW for hot water

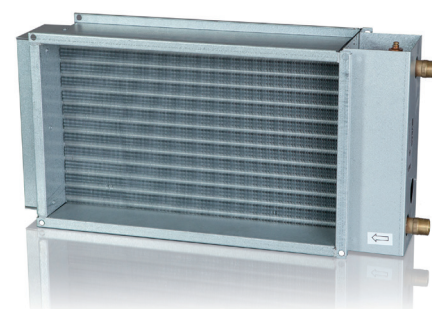
Type	Size	No. of rows	Art.No.	Price
CFW 125-2-2.5	Ø 125	2	210801	563
CFW 125-3-2.5	Ø 125	3	210811	721
CFW 160-2-2.5	Ø 160	2	210802	625
CFW 160-3-2.5	Ø 160	3	210812	741
CFW 200-2-2.5	Ø 200	2	210803	648
CFW 200-3-2.5	Ø 200	3	210813	964
CFW 250-2-2.5	Ø 250	2	210804	840
CFW 250-3-2.5	Ø 250	3	210814	1 124
CFW 315-2-2.5	Ø 315	2	210805	982
CFW 315-3-2.5	Ø 315	3	210815	1 394
CFW 400-2-2.5	Ø 400	2	210806	1 203
CFW 400-3-2.5	Ø 400	3	210816	1 676
CFW 500-2-2.5	Ø 500	2	210807	1 605



CFW

Duct heater PGV for hot water

Type	Size	No. of rows	Art. No.	Price
PGV 250x150-2-2,5	250x150	2	108520	259
PGV 400x200-2-2,5	400x200	2	106140	259
PGV 400x200-4-2,5	400x200	4	106141	391
PGV 500x250-2-2,5	500x250	2	106142	324
PGV 500x250-4-2,5	500x250	4	106143	475
PGV 500x300-2-2,5	500x300	2	106144	374
PGV 500x300-4-2,5	500x300	4	106145	543
PGV 500x400-2-2,5	500x400	2	105726	432
PGV 500x400-4-2,5	500x400	4	105727	620
PGV 600x300-2-2,5	600x300	2	106146	406
PGV 600x300-4-2,5	600x300	4	106147	569
PGV 600x350-2-2,5	600x350	2	106148	446
PGV 600x350-4-2,5	600x350	4	106149	650
PGV 700x400-2-2,5	700x400	2	106150	515
PGV 700x400-3-2,5	700x400	3	106151	644
PGV 800x400-2-2,5	800x400	2	105728	571
PGV 800x400-3-2,5	800x400	3	105729	706
PGV 800x500-2-2,5	800x500	2	106152	638
PGV 800x500-3-2,5	800x500	3	106153	792
PGV 1000x500-2-2,5	1000x500	2	106154	723
PGV 1000x500-3-2,5	1000x500	3	106155	909
PGV 1200x600-2-2,5	1200x600	2	106286	912
PGV 1200x600-3-2,5	1200x600	3	106287	1 140



PGV

Prices for our customized rectangular duct heaters and duct coolers WHS, WCS, DXES, DXCS, SHS and condensers CS are quoted on request.

Duct cooler for cooled water / DX-coil

Duct cooler CWK for cooled water				
Type	Size	No. of rows	Art. No.	Price
CWK 100-3-2,5	Ø 100	3	220020	388
CWK 125-3-2,5	Ø 125	3	220021	443
CWK 160-3-2,5	Ø 160	3	220022	458
CWK 200-3-2,5	Ø 200	3	220023	619
CWK 250-3-2,5	Ø 250	3	220024	719
CWK 315-3-2,5	Ø 315	3	220025	873
CWK 400-3-2,5	Ø 400	3	220026	971



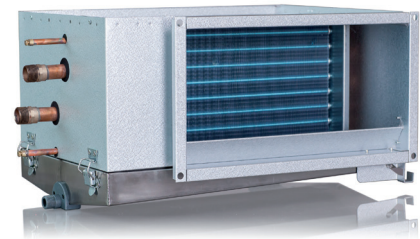
CWK

Duct cooler CFK for cooled water				
Type	Size	No. of rows	Art.No.	Price
CFK 125-3-2.5	Ø 125	3	210821	766
CFK 160-3-2.5	Ø 160	3	210822	784
CFK 200-3-2.5	Ø 200	3	210823	1 026
CFK 250-3-2.5	Ø 250	3	210824	1 194
CFK 315-3-2.5	Ø 315	3	210825	1 482
CFK 400-3-2.5	Ø 400	3	210826	1 771



CFK

Duct cooler PGK for cooled water				
Type	Size	No. of rows	Art. No.	Price
PGK 250x150-4-2,0	250x150	4	210410	739
PGK 400x200-3-2,0	400x200	3	210200	739
PGK 400x200-4-2,0	400x200	4	210400	854
PGK 500x250-3-2,0	500x250	3	210201	847
PGK 500x250-4-2,0	500x250	4	210401	972
PGK 500x300-3-2,0	500x300	3	210202	897
PGK 500x300-4-2,0	500x300	4	210402	1 035
PGK 500x400-3-2,0	500x400	3	210208	967
PGK 500x400-4-2,0	500x400	4	210408	1 147
PGK 600x300-3-2,0	600x300	3	210203	953
PGK 600x300-4-2,0	600x300	4	210403	1 123
PGK 600x350-3-2,0	600x350	3	210204	981
PGK 600x350-4-2,0	600x350	4	210404	1 158
PGK 700x400-3-2,0	700x400	3	210205	1 220
PGK 700x400-4-2,0	700x400	4	210405	1 413
PGK 800x400-3-2,0	800x400	3	210209	1 363
PGK 800x400-4-2,0	800x400	4	210409	1 535
PGK 800x500-3-2,0	800x500	3	210206	1 462
PGK 800x500-4-2,0	800x500	4	210406	1 724
PGK 1000x500-3-2,0	1000x500	3	210207	1 635
PGK 1000x500-4-2,0	1000x500	4	210407	2 012
PGK 1200x600-3-2,0	1200x600	3	210430	1 878



PGK

Circular DX batterier för cooling/heating

Circular CWDX for DX

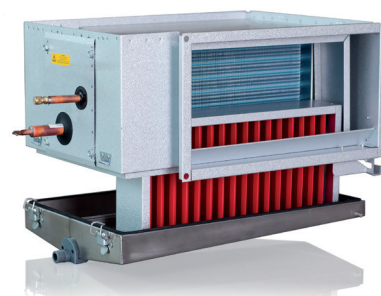
Type	Size	No. of rows	Art.no	Price
CWDX 200	Ø 200	3	220120	440
CWDX 250	Ø 250	3	220121	504
CWDX 315	Ø 315	3	220122	621
CWDX 400	Ø 400	3	220123	705



CWDX

Duct cooler PGDX with DX-coil

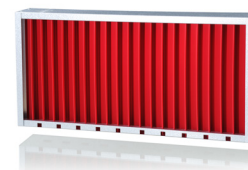
Type	Size	No. of rows	Art. No.	Price
PGDX 400x200-3-2,5	400x200	3	210240	739
PGDX 500x250-3-2,5	500x250	3	210241	847
PGDX 500x300-3-2,5	500x300	3	210242	897
PGDX 500x400-3-2,5	500x400	3	210248	967
PGDX 600x300-3-2,5	600x300	3	210243	953
PGDX 600x350-3-2,5	600x350	3	210244	981
PGDX 700x400-3-2,5	700x400	3	210245	1 174
PGDX 800x400-3-2,5	800x400	3	210249	1 272
PGDX 800x500-3-2,5	800x500	3	210246	1 340
PGDX 1000x500-3-2,5	1000x500	3	210247	1 465
PGDX 1200x600-3-2,0	1200x600	3	210431	1 641



PGDX with DE

Drop eliminator DE for PGK and PGDX

Type	Description	Art. No.	Price
DE 25x15	for PGK 250x150	210218	177
DE 40x20	for PGK/PGDX 400x200	210210	190
DE 50x25	for PGK/PGDX 500x250	210211	206
DE 50x30	for PGK/PGDX 500x300	210212	249
DE 50x40	for PGK/PGDX 500x400	210267	335
DE 60x30	for PGK/PGDX 600x300	210213	322
DE 60x35	for PGK/PGDX 600x350	210214	366
DE 70x40	for PGK/PGDX 700x400	210215	400
DE 80x40	for PGK/PGDX 800x400	210277	419
DE 80x50	for PGK/PGDX 800x500	210216	439
DE 100x50	for PGK/PGDX 1000x500	210217	458
DE 120x60	for PGK/PGDX 1200x600	210278	482



DE

Electric duct heaters - accessories

Regulators

Type	Description	Art. No.	Price
PULSER-M	Controller 230V~/400V2~, for wall mounting	104602	141
PULSER-D	Controller 230V~/400V2~, for DIN rail mounting	104603	120
PULSER 230	Controller 230V~ for input control signal 0...10V	101790	168
PULSER 400	Controller 400V2~ for input control signal 0...10V	102585	168
TTC 2000	Controlller 17,0 kW, 400V 3~/10,0 kW, 230V~	106270	615
TT-S1	Ancillary board for extra load on TTC	106271	90
TTC 25	Controller, unencapsulated, 25 A	104258	538
TTC 40F	Controller, unencapsulated, 40 A	104260	683
TTC 80F	Controller, unencapsulated, 80 A	108811	962
TT-S4/D	Step controller for 0...10V control signal, 4 relays	103656	300
TT-S6/D	Step controller for 0...10V control signal, 6 relays	103659	384
SC1/D	Signal converter, 1 step	103735	144
SC2/D	Signal converter, 2 steps	104780	167

PULSER



Sensors

Type	Description	Art. No.	Price
TG-K330	Duct sensor (0-30°C)	103728	39
TG-K350	Duct sensor (20-50°C)	103729	39
TG-K370	Duct sensor (40-70°C)	103730	39
TG-K360	Duct sensor (0-60°C)	103733	39
TG-K930	Duct sensor (0-30°C), for 415-500V	103305	84
TG-K960	Duct sensor (0-60°C), for 415-500V	103306	84
TG-K3120	Duct sensor (60-120°C)	103734	156
TG-K310	Duct sensor (-20 - +10°C)	104061	39
TG-R430	Room sensor / setpoint adjuster, IP30 (0-30°C)	101307	49
TG-R530	Room sensor, IP30 (0-30°C)	101308	35
TG-R630	Room sensor, IP54 (0-30°C)	101309	63
TG-R930	Room sensor / setpoint adjuster, for 415-500V	101330	112
TBI-30	Setpoint adjuster for panel mounting	103205	44
TG-A130	Clamp on sensor for frost protection	102032	39
TG-D130	Immersion sensor 1/4" L=120, for frost protection	102031	48
TG-D230	Immersion sensor 1/4" L=220, for frost protection	102030	53

TG-K330



TG-R430



Pressure switches

Type	Description	Art. No.	Price
DTV 300, inkl	Pressure switch 20-300 Pa, max 1 A. 230V~	101901	65
DTV 500, inkl	Pressure switch 50-500 Pa, max 5 A. 230V~	101949	65
AFS 222-181	Pressure switch 10-3000 Pa, max 15 A. 230V~	101019	117
ANS	Connection set for AFS	104929	6

Thermostats

Type	Description	Art. No.	Price
C 04 C	Duct thermostat, 1 step, IP40	103210	120
R31	Room thermostat, 1 step, IP20	101010	42
TM 1-P	Electric room thermostat 230V~, wall mounted, 1 step	101006	39

Humidistats

Type	Description	Art. No.	Price
HR-1	Humidistats, room 10-95%, ±2,5% 5 A	102588	97
HMH	Humidistats, room/duct 10-100%, ±1,5% 10 A	102589	206

DTV 300



Water-based duct heaters/coolers - accessories

Regulators and sensors*

Type	Description	Art. No.	Price
AQUA 24TF	Controller, 3-way, 24V~, frost guard	102022	207
RC	Controller, 0...10V control signal, 24V~	107364	156
RC-DO	Controller, 0...10V control signal, 24V~ w. display	107365	174
OPTIGO OP5	Controller, 0...10V control signal, 24V~	107011	197
OPTIGO OP10	Controller, 0...10V control signal/3-way, 24V~	107012	294
OPTIGO OP10-230	Controller, 0...10V control signal/3-way, 230V~	107013	300
TG-K3/PT1000	Duct sensor, IP20	102051	44
TG-R5/PT1000	Room sensor, IP30	104413	45
TG-UH/PT1000	Room sensor, IP65	104414	50
TG-A1/PT1000	Clamp on sensor for frost protection	102046	37
TG-D1/PT1000	Immersion sensor, L=120, for frost protection	102047	51
TRAF0 60	Transformer 230V~/ 24V~ 60 VA	101051	62

*= Sensors for AQUA, see page 10

OPTIGO OP5/10



Valves and actuators (max 110°C)

Type	Description	Art. No.	Price
RVAZ4-24	Valve actuator 3 point floating, for ZTV/ZTR valves	107370	141
RVAZ4-24A	Valve actuator 0...10V, for ZTV/ZTR valves	107371	194
ZTV15-0.25	Valve, 2-way, 1/2", kvs 0.25	107372	41
ZTV15-0.4	Valve, 2-way, 1/2", kvs 0.4	107373	41
ZTV15-0.6	Valve, 2-way, 1/2", kvs 0.6	107374	41
ZTV15-1.0	Valve, 2-way, 1/2", kvs 1.0	107375	41
ZTV15-1.6	Valve, 2-way, 1/2", kvs 1.6	107376	41
ZTV20-2.0	Valve, 2-way, 3/4", kvs 2.0	107377	63
ZTV20-2.5	Valve, 2-way, 3/4", kvs 2.5	107378	63
ZTV20-4.0	Valve, 2-way, 3/4", kvs 4.0	107379	63
ZTV20-6.0	Valve, 2-way, 3/4", kvs 6.0	107380	63
ZTVB25-8.0	Valve, 2-way, 3/4", kvs 8.0	107334	151
ZTR15-0.25	Valve, 3-way, 1/2", kvs 0.25	107381	53
ZTR15-0.4	Valve, 3-way, 1/2", kvs 0.4	107382	53
ZTR15-0.6	Valve, 3-way, 1/2", kvs 0.6	107383	53
ZTR15-1.0	Valve, 3-way, 1/2", kvs 1.0	107384	53
ZTR15-1.6	Valve, 3-way, 1/2", kvs 1.6	107385	63
ZTR20-2.0	Valve, 3-way, 3/4", kvs 2.0	107386	63
ZTR20-2.5	Valve, 3-way, 3/4", kvs 2.5	107387	63
ZTR20-4.0	Valve, 3-way, 3/4", kvs 4.0	107388	63
ZTR20-6.0	Valve, 3-way, 3/4", kvs 6.0	107389	63
ZTRB25-8.0	Valve, 3-way, 1", kvs 8.0	107872	151

Actuator RVAZ4-24



Valve ZTV



Valves and actuators (max 150°C)

Type	Description	Art. No.	Price
RVAN5-24	Valve actuator 3 point floating, for MTVS/MTRS valves	107390	250
RVAN5-24A	Valve actuator 0...10 V, for MTVS/MTRS valves	107391	339
MTVS15-0.63	Valve, 2-way, 1/2", kvs 0.63	108056	151
MTVS15-1.0	Valve, 2-way, 1/2", kvs 1.0	108057	151
MTVS15-1.6	Valve, 2-way, 1/2", kvs 1.6	108058	151
MTVS15-2.1	Valve, 2-way, 1/2", kvs 2.1	108059	151
MTVS15-2.7	Valve, 2-way, 1/2", kvs 2.7	108060	151
MTVS20-4.2	Valve, 2-way, 3/4", kvs 4.2	108061	151
MTVS20-5.6	Valve, 2-way, 3/4", kvs 5.6	108062	151
MTVS25-10	Valve, 2-way, 1", kvs 10	108063	151
MTVS32-16	Valve, 2-way, 1 1/4", kvs 16	108064	183
MTRS15-0.63	Valve, 3-way, 1/2", kvs 0.63	107399	141
MTRS15-1.0	Valve, 3-way, 1/2", kvs 1.0	107400	141
MTRS15-1.6	Valve, 3-way, 1/2", kvs 1.6	107401	141
MTRS15-2.1	Valve, 3-way, 1/2", kvs 2.1	107402	141
MTRS15-2.7	Valve, 3-way, 1/2", kvs 2.7	107403	141
MTRS20-4.2	Valve, 3-way, 3/4", kvs 4.2	107404	148
MTRS20-5.6	Valve, 3-way, 3/4", kvs 5.6	107405	148
MTRS25-10	Valve, 3-way, 1", kvs 10.0	107406	172
MTRS32-16	Valve, 3-way, 1 1/4", kvs 16.0	107407	193

Actuator RVAN5-24A



Valve MTRS



ROBUST - electric fan heaters for demanding environments

ROBUST F - for fire hazardous environments

Type	W	V	Art. No.	Price
F 2	2000	230V~	401218	1321
F 3	3000	230V~	401205	1325
F 6	6000	400V3~	401207	1546
F 6N	6000	230V3~	401206	1546
F 9	9000	400V3~	401209	1736
F 9N	9000	230V3~	401208	1736

ROBUST C
wall mounted



ROBUST C - for corrosive environments

Type	W	V	Art. No.	Price
C 3	3000	230V~	401200	1 909
C 6	6000	400V3~	401202	2 327
C 6N	6000	230V3~	401201	2 327
C 9	9000	400V3~	401204	2 494
C 9N	9000	230V3~	401203	2 494
C15	15000	400V3~	401217	3 378

ROBUST F



ROBUST H - for high temperatures (up to 70°C)

Type	W	V	Art. No.	Price
H 6	6000	400V3N~	401213	2 159
H 6N	6000	230V3~	401212	2 159
H 9	9000	400V3N~	401214	2 364

ROBUST V - for ships and offshore

Type	W	V	Art. No.	Price
V3	3000	400V3~	401215	1 823
V3R	3000	230V~	401219	1 823
V3.6	3600	440V3~	401210	1 823
V5	5000	400V3~	401216	1 877
V5N	5000	230V3~	401250	1 877
V6	6000	440V3~	401211	1 877

ROBUST - accessories

Type	Description	Art. No.	Price
RTC	Ext. control box for model C and V	402001	258
RTC4	Ext. control box for up to 4 pcs model C and/or V	402007	801
RTH	Ext. thermostat 0-70°C for model H	402002	225

ROBUST V
wall mounted



EA / ENV - electric fan heater for wall-mounting

EA - electric fan heaters				
Type	W	V	Art. No.	Price
EA 6	6000	400V3N~	401501	1 338
EA 9	9000	400V3N~	401502	1 533
EA 14	14000	400V3N~	401503	1 923
EA 21	21000	400V3N~	401504	2 310
EA 30	30000	400V3N~	401505	2 800

EA - accessories			
Type	Description	Art. No.	Price
EALH 10	Air deflector for EA 6 and EA 9	401111	153
EALH 20	Air deflector for EA 14, EA 21 and EA 30	401121	181
TG-R430	Room sensor / setpoint adjuster, IP30 (0-30°C)	101307	49
TG-R530	Room sensor, IP30 (0-30°C)	101308	35
TG-R630	Room sensor, IP54 (0-30°C)	101309	63
MCD4-1999	Room thermostat, IP21	108670	162

Note: The EA fan heaters must be completed with a sensor/thermostat (If EA is controlled by 0-10V control signal, sensor/thermostat shall not be installed).



Fan heater EA

Fan heater ENV-L

ENV-L - electric fan heaters *				
Type	W	V	Art. No.	Price
ENV-L 2	2000	230V~	401530	587
ENV L 3	3000	230V~	401532	587
ENV-L 5	5000	400V3N~	401534	627
ENV-L 9	9000	400V3N~	401536	742
ENV-L 15	15 000	400V3N~	401538	1 320

* Including external thermostat MCD4-1999 and wall bracket.



MCD4-1999



BX / KX - Portable electric fan heaters

BX - electric fan heaters				
Type	W	V	Art. No.	Price
BX 2E	2000	230V~	451200	332
BX 3E	3000	230V~	451210	363
BX 5E	5000	400V3N~	451220	447
BX 9SE	9000	400V3~	451250	557
BX 9AE	9000	400V3~	451260	612
BX 15E	15000	400V3~	451280	908
BX 20E	20000	400V3N~	451380	1 618
BX 30E	30000	400V3N~	451390	1 800



Fan heater BX

KX - electric fan heater				
Type	W	V	Art. No.	Price
KX 2	2000	230V~	451303	186



Fan heater KX 2

AW C/CE/DX - Fan heaters for demanding environments

AW C/CE/DX			
Type	Description	Art. No	Price
AW C22	For corrosive environments coil in EN 1.4404	421400	7 025
AW C42	For corrosive environments coil in EN 1.4404	421410	9 129
AW C22E	For corrosive environments epoxy coated coil	421406	3 512
AW C42E	For corrosive environments epoxy coated coil	421416	4 569
AW DX22CE	For corrosive environments epoxy coated coil	421407	4 035

AW C/CE - accessories			
Type	Description	Art. No	Price
AWST35	Thermostat, 0-35 °C, IP65	422092	211
AWPFC 22	Filter for AW C 22/D 22	422094	153
AWPFC 42	Filter for AW C 42/D 42	422095	128
AWPFH 22	Filter for AW CE22	422096	153
AWPFH 42	Filter for AW CE42	422097	128
VM 8622-3,6	Solenoid Valve, EN 1.4401	108675	623
VM 8622-8,4	Solenoid Valve, EN 1.4401	108676	841
VM 8631-8,4	Solenoid Valve in Brass	108677	332
RTRD 2	Transformer, 5 steps, 400V3~	108699	504

AW - Wall-mounted fan heaters

AW 13		
Type	Art. No	Price
AW 13s	421350	732
AW 13a	421351	1 062
AW 13s-EC	421360	990
AW 13a-EC	421361	1 308

AW 23		
Type	Art. No	Price
AW 23s	421352	853
AW 23a	421353	1 179
AW 23s-EC	421362	1 110
AW 23a-EC	421363	1 424

AW 43		
Type	Art. No	Price
AW 43s	421354	1 132
AW 43a	421355	1 530
AW 43s-EC	421364	1 391
AW 43a-EC	421365	1 781

AW 63		
Type	Art. No	Price
AW 63s	421356	1 559
AW 63a	421357	1 880
AW 63s-EC	421366	1 705
AW 63a-EC	421367	2 014



AW 13 - accessories			
Type	Description	Art. No	Price
AWV 12	Wall brackets included in AW 13		
AWT 12-22	Ceiling brackets, pair	422050	40
AWLH 12	Air deflector	422055	107
AWPF 12	Filter	422064	105
AWLA 12	Induction louvre	422080	207

AW 23 - accessories			
Type	Description	Art. No	Price
AWV 22	Wall brackets included in AW 23		
AWT 12-22	Ceiling brackets, pair	422050	40
AWLH 22	Air deflector	422056	107
AWPF 22	Filter	422065	105
AWLA 22	Induction louvre	422081	207

AW 43 - accessories			
Type	Description	Art. No	Price
AWV 42	Wall brackets included in AW 43		
AWT 42	Ceiling brackets, pair	422051	46
AWLH 42	Air deflector	422057	160
AWPF 42	Filter	422066	128
AWLA 42	Induction louvre	422082	266

AW 63 - accessories			
Type	Description	Art. No	Price
AWV 62	Wall brackets included in AW 63		
AWT 62	Ceiling brackets, pair	422052	46
AWLH 62	Air deflector	422058	212
AWPF 62	Filter	422067	172
AWLA 62	Induction louvre	422083	311

CAW - Ceiling-mounted fan heater for hot water

CAW 11 - 41		
Type	Art. No	Price
CAW 11s	421320	1 036
CAW 11a	421321	1 515
CAW 21s	421322	1 303
CAW 21a	421323	1 733
CAW 21s-EC	421370	1 560
CAW 21a-EC	421371	1 974
CAW 41s	421324	1 738
CAW 41a	421325	2 143
CAW 41s-EC	421372	1 997
CAW 41a-EC	421373	2 392

CAW 11-41 - accessories			
Type	Description	Art. No	Price
CAWF11	Panel filter for CAW11	421053	105
CAWE11	Extension sleeve for CAW11	422025	102
CAWL11	Air deflector for CAW11	422060	151
CAWF21	Panel filter for CAW21	421054	112
CAWE21	Extension sleeve for CAW21	422026	116
CAWL21	Air deflector for CAW21	422061	159
CAWF41	Panel filter for CAW41	421055	128
CAWE41	Extension sleeve for CAW41	422027	168
CAWL41	Air deflector for CAW41	422062	172

Accessories for AW and CAW

Sensors for CAW-a, AW-a			
Type	Description	Art. No	Price
TG-R430	Room sensor / setpoint adjuster, IP30 (0-30°C)	101307	49
TG-R530	Room sensor, IP30 (0-30°C)	101308	35
TG-R630	Room sensor, IP54 (0-30°C)	101309	63

Switches and thermostats for CAW-s and AW -s			
Type	Description	Art. No	Price
AWC	Fan speed switch, IP42	101267	80
SMT-D-4P-EM	Fan speed switch, IP54	109125	103
CAWC	Fan speed switch, IP42	101268	80
SR121/1	Room thermostat, IP54	101033	195
R31	Room thermostat, IP20	101010	42

Valve with actuators for CAW-s and AW-s			
Type	Description	Art.No	Price
AWTV 12-22	for CAW-s 11, CAW-s 21, AW-s 13 and AW-s 23. IP44	422084	140
AWTV 42-62	for CAW-s 41, AW-s 43 and AW-s 63. IP44	422085	176
ZTR20-6,0	Valve, 3-way, for AW 13s and AW 23s	107389	65
ZTRB25-8	Valve, 3-way, for AW 43s and AW 63s	107872	155
RVAZ4-230	Valve actuator for 3-way valves ZTR20-6,0 and ZTRB25-8	107340	151



CAW



AWC



AWTV

AW DX/K - Fan heater/cooler, direct expansion/cooled water

AW DX			
Type	Description	Art. No	Price
AW DX22	Cooling / heating, DX	421402	2 527
AW DX22-EC	Cooling/heating, DX, EC-motor	421408	2 806
AW DX42	Cooling / heating, DX	421412	3 355
AW DX42-EC	Cooling/heating, DX, EC-motor	421418	3 604

AW K			
Type	Description	Art. No	Price
AW K22	Cooling heating, water	421405	2 438
AW K22-EC	Cooling/heating, water, EC-motor	421409	2 718
AW K42	Cooling heating, water	421415	3 267
AW K42-EC	Cooling/heating, water, EC-motor	421419	3 519

AW DX/K - accessories			
Type	Description	Art. No	Price
AWLH DX22/K22	Air deflector	422053	160
AWLH DX42/K42	Air deflector	422054	212
SR121/1	Room thermostat, IP54	101033	201
R31	Room thermostat, IP20	101010	42
AWTV 42-62	Valve + actuators for AW K, IP44	422085	176



AW DX

LAF - Dehumidifier

Dehumidifier LAF 13/31/51				
Type	V	A (fuse)	Art. No.	Price
LAF 13	230V~	10	602042	329
LAF 31	230V~	10	602050	873
LAF 51S	230V~	10	601080	2 455
LAF 51E2S	230V~	10	601082	2 570

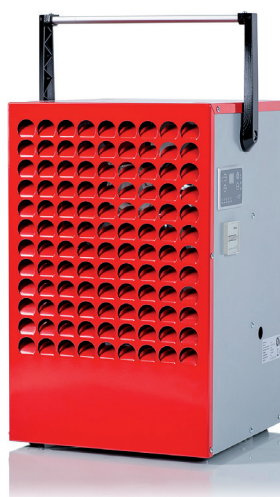
Dehumidifier LAF 31/51 - accessories			
Type	Description	Art. No.	Price
LAF-HY	Humidistats with cable connection	602010	244
LAF-W51	Wall brackets for LAF 51		123
—	Running time meter, factory mounted		111



LAF 51



LAF 13



LAF 31

Terms of sales

General conditions:	Orgalime, S 2022.
Terms of delivery:	Incoterms EXW Hässleholm, Sweden, packing included.
Terms of payment:	Payment in advance. Currency, EUR.
Guarantee:	3 years from date of delivery. The guarantee includes spare parts only. Other costs such as labour costs are not included.
Changes:	We reserve us from typographical errors and the right to change prices and conditions as well as the technical specifications of the products without previous announcement.
Packing and packing waste:	The customer in the recipient country is responsible for the recycling of packaging and disposal of old electrical equipment in accordance with Directive 94/62/EC- Packing and Packing Waste and Directive 2002/96/EC Waste Electrical and Electronic Equipment (WEEE).

Delivered products remain in our possession until full payment has been settled.



VEAB Heat Tech AB
Stattenavägen 50
SE-281 33 Hässleholm
SWEDEN

Visitors address
Stattenavägen 50
Delivery address
Ängdalavägen 4
281 33 Hässleholm

Org.No.
556138-3166
VAT.No.
SE556138316601

Postal Cheque Service
48 51 08-5
Bank Transfer Service
926-0365

Phone
Nat 0451-485 00
Int +46 451 485 00
www.veab.com