



Price list January 2019

Prices in EURO €

Content

Duct heaters - electric

Page 3	Circular
Page 4	Circular
Page 5	Circular
Page 6	Circular
Page 6 -7	Rectangular
Page 10-11	Accessories

Modell

CV -MQU / -MQEM / -MQXL
CV - MTU / -MTEM / -MTXL
CV - M / -ML / -E
CV - PTU / -PTEM / -PTXL / -P
VFL / VFLPG / VTL / VRA

Duct heaters / Duct coolers

Page 8	Circular duct heater for hot water
Page 8	Rectangular duct heater for hot water
Page 9	Circular duct cooler for cooled water
Page 9	Rectangular duct cooler for cooled water
Page 9	Rectangular duct cooler with DX-coil
Page 9	Accessories - droplet eliminator
Page 10-11	Accessories - others

CWW
PGV
CWK
PGK
PGDX
DE

Fan heaters - electric

Page 12	Portable/wall mounted for demanding environments
Page 13	Wall mounted for permanent heating
Page 13	Wall mounted for permanent heating
Page 13	Portable/wall mounted for temporary heating
Page 13	Portable for temporary heating

ROBUST
EA
ENV-L
BX
KX2

Fan heaters / coolers

Page 14	For demanding environments
Page 14	Wall mounted
Page 15	Ceiling mounted
Page 15	Wall mounted, direct expansion
Page 15	Wall mounted, cold water
Page 15	Accessories

AW C/D/Ex/H
AW
CAW
AW DX
AW K

Dehumidifiers

Page 16	For professional use
Page 16	For basements, water damages etc
Page 16	For domestic use

LAF 50/100
LAF 30
LAF 12

Terms of sales

Page 18	Terms of sales
---------	----------------

Electric duct heater CV -MQU / -MQEM / -MQXL (built-in temperature regulator and electronic air flow monitor)

300 W - 12000 W

Type	Power W	Voltage V	For external or internal temperature setting		For external temp. set- ting min/max limitation		For external 0...10V control signal.	
			Model -MQU**	Art. No.	Price	Art. No.	Price	Art. No.
CV 10-04-1_	400	230V~	200301	322	200201	345	200501	449
CV 10-06-1_	600	230V~	200302	327	200202	351	200502	454
CV 12-03-1_	300	230V~	200303	331	200203	356	200503	458
CV 12-06-1_	600	230V~	200304	345	200204	372	200504	474
CV 12-09-1_	900	230V~	200305	362	200205	385	200505	488
CV 12-12-1_	1200	230V~	200306*	370	200206	394	200506	497
CV 12-15-1_	1500	230V~	200307	383	200207	411	200507	511
CV 12-18-1_	1800	230V~	200308	403	200208	426	200508	529
CV 16-03-1_	300	230V~	200309	344	200209	371	200509	472
CV 16-06-1_	600	230V~	200310	344	200210	371	200510	472
CV 16-09-1_	900	230V~	200311*	363	200211	387	200511	491
CV 16-12-1_	1200	230V~	200312	376	200212	401	200512	503
CV 16-15-1_	1500	230V~	200313	379	200213	418	200513	506
CV 16-18-1_	1800	230V~	200314	379	200214	418	200514	506
CV 16-21-1_	2100	230V~	200315*	388	200215	415	200515	518
CV 16-27-1_	2700	230V~	200316	413	200216	437	200516	540
CV 16-33-2_	3300	400V2~	200317	431	200217	457	200517	559
CV 16-50-2_	5000	400V2~	200318	488	200218	513	200518	615
CV 16-50-3_	5000	400V3~	200319	703	200219	703	200519	806
CV 20-06-1_	600	230V~	200320	365	200220	388	200520	493
CV 20-09-1_	900	230V~	200321	378	200221	404	200521	505
CV 20-12-1_	1200	230V~	200322	378	200222	404	200522	505
CV 20-15-1_	1500	230V~	200323	395	200223	420	200523	522
CV 20-18-1_	1800	230V~	200324	395	200224	420	200524	522
CV 20-21-1_	2100	230V~	200325*	400	200225	423	200525	526
CV 20-30-1_	3000	230V~	200326	439	200226	464	200526	568
CV 20-30-2_	3000	400V2~	200327	439	200227	464	200527	568
CV 20-50-2_	5000	400V2~	200328*	501	200228	526	200528	628
CV 20-60-2_	6000	400V2~	200329	526	200229	526	200529	653
CV 20-60-3_	6000	400V3~	200330	742	200230	742	200530	845
CV 25-06-1_	600	230V~	200331	383	200231	411	200531	511
CV 25-09-1_	900	230V~	200332	403	200232	426	200532	529
CV 25-12-1_	1200	230V~	200333	403	200233	426	200533	529
CV 25-15-1_	1500	230V~	200334	416	200234	440	200534	544
CV 25-18-1_	1800	230V~	200335	416	200235	440	200535	544
CV 25-21-1_	2100	230V~	200336*	425	200236	451	200536	554
CV 25-30-1_	3000	230V~	200337*	451	200237	476	200537	577
CV 25-30-2_	3000	400V2~	200338	451	200238	476	200538	577
CV 25-50-2_	5000	400V2~	200339	513	200239	539	200539	641
CV 25-60-2_	6000	400V2~	200340*	539	200240	563	200540	663
CV 25-60-3_	6000	400V3~	200342	752	200242	752	200542	854
CV 25-90-3_	9000	400V3~	200343	802	200243	802	200543	905
CV 25-120-3_	12000	400V3~	200344	924	200244	924	200544	1 025
CV 31-09-1_	900	230V~	200345	419	200245	445	200545	546
CV 31-12-1_	1200	230V~	200346	419	200246	445	200546	546
CV 31-15-1_	1500	230V~	200347	437	200247	462	200547	558
CV 31-18-1_	1800	230V~	200348	437	200248	462	200548	558
CV 31-21-1_	2100	230V~	200349	439	200249	464	200549	568
CV 31-30-1_	3000	230V~	200350	462	200250	487	200550	589
CV 31-30-2_	3000	400V2~	200351	462	200251	487	200551	589
CV 31-50-2_	5000	400V2~	200352	523	200252	548	200552	650
CV 31-60-2_	6000	400V2~	200353*	547	200253	572	200553	675
CV 31-60-3_	6000	400V3~	200355	762	200255	763	200555	865
CV 31-90-3_	9000	400V3~	200356*	815	200256	815	200556	918
CV 31-120-3_	12000	400V3~	200357	936	200257	936	200557	1 038
CV 40-30-1_	3000	230V~	200360	474	200260	499	200560	601
CV 40-30-2_	3000	400V2~	200361	474	200261	499	200561	601
CV 40-50-2_	5000	400V2~	200362	533	200262	559	200562	661
CV 40-60-2_	6000	400V2~	200363	559	200263	584	200563	687
CV 40-60-3_	6000	400V3~	200365	775	200265	775	200565	877
CV 40-90-3_	9000	400V3~	200366	826	200266	826	200566	929
CV 40-120-3_	12000	400V3~	200367	954	200267	954	200567	1 056

CV -MQU



All models, except -MQU and -MTU, can be manufactured in protection class IP55 at an additional cost of EUR 55,-/heater.

* = Available from stock.

**=For model -MQU external sensor is required.

***=For model -MQEM external setting and sensor are required.

More information about our products are available in our product catalogue and on our website www.veab.com

Electric duct heater CV -MTU / -MTEM / -MTXL (built-in temp. regulator) 300 W - 12000 W

Type	Power W	Voltage V	For external or internal temperature setting Model -MTU**		For external temp. set- ting min/max limitation Model -MTEM***		For external 0...10V control signal. Model -MTXL	
			Art. No.	Price	Art. No.	Price	Art. No.	Price
CV 10-04-1	400	230V~	208301	224	208201	249	208501	352
CV 10-06-1	600	230V~	208302	229	208202	254	208502	356
CV 12-03-1	300	230V~	208303	234	208203	259	208503	361
CV 12-06-1	600	230V~	208304	249	208204	275	208504	377
CV 12-09-1	900	230V~	208305	264	208205	289	208505	391
CV 12-12-1	1200	230V~	208306	272	208206	297	208506	400
CV 12-15-1	1500	230V~	208307	287	208207	313	208507	415
CV 12-18-1	1800	230V~	208308	305	208208	330	208508	432
CV 16-03-1	300	230V~	208309	248	208209	274	208509	375
CV 16-06-1	600	230V~	208310	248	208210	274	208510	375
CV 16-09-1	900	230V~	208311	265	208211	291	208511	394
CV 16-12-1	1200	230V~	208312	279	208212	303	208512	406
CV 16-15-1	1500	230V~	208313	283	208213	321	208513	410
CV 16-18-1	1800	230V~	208314	283	208214	321	208514	410
CV 16-21-1	2100	230V~	208315	292	208215	318	208515	421
CV 16-27-1	2700	230V~	208316	316	208216	340	208516	443
CV 16-33-2	3300	400V2~	208317	334	208217	360	208517	462
CV 16-50-2	5000	400V2~	208318	391	208218	416	208518	518
CV 16-50-3	5000	400V3~	208319	606	208219	606	208519	708
CV 20-06-1	600	230V~	208320	268	208220	292	208520	396
CV 20-09-1	900	230V~	208321	282	208221	306	208521	408
CV 20-12-1	1200	230V~	208322	282	208222	306	208522	408
CV 20-15-1	1500	230V~	208323	298	208223	324	208523	425
CV 20-18-1	1800	230V~	208324	298	208224	324	208524	425
CV 20-21-1	2100	230V~	208325	302	208225	327	208525	428
CV 20-30-1	3000	230V~	208326	342	208226	368	208526	470
CV 20-30-2	3000	400V2~	208327	342	208227	368	208527	470
CV 20-50-2	5000	400V2~	208328	404	208228	428	208528	531
CV 20-60-2	6000	400V2~	208329	428	208229	428	208529	556
CV 20-60-3	6000	400V3~	208330	645	208230	645	208530	747
CV 25-06-1	600	230V~	208331	287	208231	313	208531	415
CV 25-09-1	900	230V~	208332	305	208232	330	208532	432
CV 25-12-1	1200	230V~	208333	305	208233	330	208533	432
CV 25-15-1	1500	230V~	208334	319	208234	343	208534	447
CV 25-18-1	1800	230V~	208335	319	208235	343	208535	447
CV 25-21-1	2100	230V~	208336	329	208236	354	208536	457
CV 25-30-1	3000	230V~	208337	354	208237	379	208537	480
CV 25-30-2	3000	400V2~	208338	354	208238	379	208538	480
CV 25-50-2	5000	400V2~	208339	416	208239	442	208539	544
CV 25-60-2	6000	400V2~	208340	442	208240	466	208540	566
CV 25-60-3	6000	400V3~	208342	656	208242	656	208542	757
CV 25-90-3	9000	400V3~	208343	704	208243	704	208543	808
CV 25-120-3	12000	400V3~	208344	827	208244	827	208544	929
CV 31-09-1	900	230V~	208345	322	208245	347	208545	449
CV 31-12-1	1200	230V~	208346	322	208246	347	208546	449
CV 31-15-1	1500	230V~	208347	340	208247	365	208547	461
CV 31-18-1	1800	230V~	208348	340	208248	365	208548	461
CV 31-21-1	2100	230V~	208349	342	208249	368	208549	470
CV 31-30-1	3000	230V~	208350	365	208250	390	208550	492
CV 31-30-2	3000	400V2~	208351	365	208251	390	208551	492
CV 31-50-2	5000	400V2~	208352	426	208252	451	208552	554
CV 31-60-2	6000	400V2~	208353	450	208253	475	208553	578
CV 31-60-3	6000	400V3~	208355	664	208255	665	208555	768
CV 31-90-3	9000	400V3~	208356	719	208256	719	208556	822
CV 31-120-3	12000	400V3~	208357	838	208257	838	208557	941
CV 40-30-1	3000	230V~	208360	377	208260	402	208560	504
CV 40-30-2	3000	400V2~	208361	377	208261	402	208561	504
CV 40-50-2	5000	400V2~	208362	436	208262	462	208562	564
CV 40-60-2	6000	400V2~	208363	462	208263	487	208563	590
CV 40-60-3	6000	400V3~	208365	679	208265	679	208565	781
CV 40-90-3	9000	400V3~	208366	729	208266	729	208566	831
CV 40-120-3	12000	400V3~	208367	857	208267	857	208567	958



CV -MTU

All models, except -MQU and -MTU, can be manufactured in protection class IP55 at an additional cost of EUR 55,-/heater.

**=For model -MTU external sensor is required.

***=For model -MTEM external setting and sensor are required.

Electric duct heater CV -M / -ML / -EL (ext. temperature regulator) 300 W - 12000 W

Type	Power	Voltage	Model -M up to 9000 W Model -E** for 12 000 W		Model -ML up to 9000 W Model -EL** for 12 000 W	
			Art. No.	Price	Art. No.	Price
CV 10-04-1_ _ _	400	230V~	208001*	119	208101	160
CV 10-06-1_ _ _	600	230V~	208002	123	208102	166
CV 12-03-1_ _ _	300	230V~	208003	128	208103	171
CV 12-06-1_ _ _	600	230V~	208004	141	208104	185
CV 12-09-1_ _ _	900	230V~	208005*	158	208105	200
CV 12-12-1_ _ _	1200	230V~	208006*	166	208106	208
CV 12-15-1_ _ _	1500	230V~	208007	181	208107	224
CV 12-18-1_ _ _	1800	230V~	208008	198	208108	241
CV 16-03-1_ _ _	300	230V~	208009	141	208109	183
CV 16-06-1_ _ _	600	230V~	208010	141	208110	183
CV 16-09-1_ _ _	900	230V~	208011*	159	208111	203
CV 16-12-1_ _ _	1200	230V~	208012	171	208112	215
CV 16-15-1_ _ _	1500	230V~	208013	174	208113	219
CV 16-18-1_ _ _	1800	230V~	208014	174	208114	219
CV 16-21-1_ _ _	2100	230V~	208015*	185	208115	229
CV 16-27-1_ _ _	2700	230V~	208016	209	208116	251
CV 16-33-2_ _ _	3300	400V2~	208017	228	208117	271
CV 16-50-2_ _ _	5000	400V2~	208018*	284	208118	328
CV 16-50-3_ _ _	5000	400V3~	208019	284	208119	328
CV 20-06-1_ _ _	600	230V~	208020	160	208120	203
CV 20-09-1_ _ _	900	230V~	208021	179	208121	216
CV 20-12-1_ _ _	1200	230V~	208022	179	208122	216
CV 20-15-1_ _ _	1500	230V~	208023	193	208123	234
CV 20-18-1_ _ _	1800	230V~	208024	193	208124	234
CV 20-21-1_ _ _	2100	230V~	208025*	198	208125	236
CV 20-30-1_ _ _	3000	230V~	208026	236	208126	279
CV 20-30-2_ _ _	3000	400V2~	208027	236	208127	279
CV 20-50-2_ _ _	5000	400V2~	208028*	295	208128	339
CV 20-60-2_ _ _	6000	400V2~	208029	321	208129	364
CV 20-60-3_ _ _	6000	400V3~	208030	321	208130	365
CV 25-06-1_ _ _	600	230V~	208031	180	208131	224
CV 25-09-1_ _ _	900	230V~	208032	198	208132	241
CV 25-12-1_ _ _	1200	230V~	208033	198	208133	241
CV 25-15-1_ _ _	1500	230V~	208034	213	208134	255
CV 25-18-1_ _ _	1800	230V~	208035	213	208135	255
CV 25-21-1_ _ _	2100	230V~	208036*	222	208136	265
CV 25-30-1_ _ _	3000	230V~	208037	246	208137	290
CV 25-30-2_ _ _	3000	400V2~	208038	246	208138	290
CV 25-50-2_ _ _	5000	400V2~	208039	309	208139	352
CV 25-60-2_ _ _	6000	400V2~	208040*	332	208140	377
CV 25-60-3_ _ _	6000	400V3~	208042	332	208142	377
CV 25-90-3_ _ _	9000	400V3~	208043	381	208143	425
CV 25-120-3_ _ _	12000	400V3~	208644	431	208744**	474
CV 31-09-1_ _ _	900	230V~	208045	214	208145	256
CV 31-12-1_ _ _	1200	230V~	208046	214	208146	256
CV 31-15-1_ _ _	1500	230V~	208047	227	208147	271
CV 31-18-1_ _ _	1800	230V~	208048	227	208148	271
CV 31-21-1_ _ _	2100	230V~	208049	236	208149	279
CV 31-30-1_ _ _	3000	230V~	208050	258	208150	301
CV 31-30-2_ _ _	3000	400V2~	208051	258	208151	301
CV 31-50-2_ _ _	5000	400V2~	208052	320	208152	362
CV 31-60-2_ _ _	6000	400V2~	208053*	342	208153	384
CV 31-60-3_ _ _	6000	400V3~	208055	342	208155	384
CV 31-90-3_ _ _	9000	400V3~	208056*	395	208156	436
CV 31-120-3_ _ _	12000	400V3~	208657**	444	208757**	486
CV 40-30-1_ _ _	3000	230V~	208060	269	208160	311
CV 40-30-2_ _ _	3000	400V2~	208061	269	208161	311
CV 40-50-2_ _ _	5000	400V2~	208062	330	208162	374
CV 40-60-2_ _ _	6000	400V2~	208063	355	208163	400
CV 40-60-3_ _ _	6000	400V3~	208065	355	208165	400
CV 40-90-3_ _ _	9000	400V3~	208066	406	208166	449
CV 40-120-3_ _ _	12000	400V3~	208667**	460	208767**	504



CV -M

All models, except -MQU and -MTU, can be manufactured in protection class IP55 at an additional cost of EUR 55,-/heater.

* = Available from stock.

**= 12000W manufactured as model CV__-120-3E / 3EL.

Electric duct heater CV -PTU / -PTEM / -PTXL / -P (for air velocity > 0,5m/s) 200 W - 1800 W

Type	Power W	Voltage V	For external or internal temperature setting Model -PTU**		For external temp.set- ting min/max limitation Model -PTEM***		For external 0...10V control signal. Model -PTXL		For external control Model -P	
			Art. No.	Price	Art. No.	Price	Art. No.	Price	Art. No.	Price
CV 08-02-1	200	230V~	209625	232	209675	254	209650	355	209600	127
CV 10-02-1	200	230V~	209628	232	209678	254	209653	355	209603	127
CV 10-04-1	400	230V~	209629	239	209679	261	209654	363	209604	134
CV 12-02-1	200	230V~	209632	239	209682	261	209657	363	209607	134
CV 12-04-1	400	230V~	209633	258	209683	282	209658	382	209608	155
CV 12-06-1	600	230V~	209634	278	209684	300	209659	402	209609	173
CV 12-08-1	800	230V~	209635	291	209685	314	209660	415	209610	187
CV 12-10-1	1000	230V~	209636	310	209686	333	209661	434	209611	206
CV 12-12-1	1200	230V~	209637	332	209687	355	209662	456	209612	228
CV 16-06-1	600	230V~	209645	278	209695	300	209670	402	209620	173
CV 16-12-1	1200	230V~	209646	304	209696	328	209671	428	209621	201
CV 16-18-1	1800	230V~	209647	349	209697	372	209672	473	209622	245

All models, except -PTU, can be manufactured in protection class IP55 at an additional cost of EUR 55,-/heater.

**=For model -PTU external sensor is required.

***=For model -PTEM external setting and sensor are required.

Electric duct heaters VFL / VFLPG / VTL / VRA



You will obtain the total price by adding the prices in the tables accordingly:

- Duct heater for external temperature control (A+B)

The total price will be obtained by adding the price for the frame, table A, with the price for all steps, table B.

Prices are valid for voltage 400V2~/400V3~.

For other supply voltage between 230V3~ and 500V3~ the prices will be increase with 15%.

- Duct heater with built-in control (A+C)

The total price will be obtained by adding the price for the frame, table A, with the price for the total power, table C.

- Duct heater with built-in control and electronic air flow monitor (A+D)

The total price will be obtained by adding the price for the frame, table A, with the price for the total power, table D.

In addition to the price:

At degree of protection IP55 the prices in table A will increase with 50%.

At degree of protection IP65 the prices in table A will increase with 100%.

For loose counter flanges (2 pcs) the price in table A will increase with 25%.

Table A

Front area m ²	Price
-0.05	309
0.06-0.10	313
0.11-0.15	329
0.16-0.20	342
0.21-0.30	360
0.31-0.50	394
0.51-0.80	442
0.81-1.00	473
1.01-1.25	499
1.26-1.50	560
1.51-2.00	641
2.01-2.50	781
2.51-3.00	936
3.01-3.50	1 092
3.51-4.00	1 246
4.01-4.50	1 402
4.51-5.00	1 558
5.01-5.50	1 714
5.51-6.00	1 869

Table B - external control

Price /step		
Power kW	Price	
0.5	50	400V2~
1.0	56	
1.5	76	
2.0	84	
2.5	90	
3.0	99	
3.5	103	
4.0	112	400V3~
4.5	114	
5.0	121	
5.5	129	
6.0	146	
6.5	153	
7.0	158	
7.5	170	
8.0	200	
9.0	209	
10.0	227	
11.0	239	
12.0	252	
13.0	267	
14.0	283	
15.0	317	
16.0	334	
17.0	346	
18.0	371	
20.0	413	
22.0	493	
24.0	529	
26.0	614	
28.0	632	
30.0	668	
32.0	711	
34.0	746	
36.0	779	
40.0	904	
43.0	962	

Electric duct heaters VFL / VFLPG / VTL / VRA

Table A

Front area m ²	Price
-0.05	309
0.06-0.10	313
0.11-0.15	329
0.16-0.20	342
0.21-0.30	360
0.31-0.50	394
0.51-0.80	442
0.81-1.00	473
1.01-1.25	499
1.26-1.50	560
1.51-2.00	641
2.01-2.50	781
2.51-3.00	936
3.01-3.50	1 092
3.51-4.00	1 246
4.01-4.50	1 402
4.51-5.00	1 558
5.01-5.50	1 714
5.51-6.00	1 869

Table C - built-in control

		Price / power					
		Model					
		Total power	MTEML 400V~ Regulation: TG-sensor**	MTXL 400V~ Regulation: 0...10V	Total power	MTEML 230V~ Regulation: TG-sensor**	MTXL 230V~ Regulation: 0...10V
		kW	Price	Price	kW	Price	Price
400V2~	400V2~	1.5	378	461	1.5	378	461
		2	383	473	2	383	473
		3	411	494	3	411	494
		5	431	516	5	658	769
		6	668	747	6	818	930
400V3~	400V3~	7,5	700	779	7,5	892	1 023
		9	887	960	9	937	1 070
		13	931	1 005	13	1 425	1 425
		15	1 030	1 123	15	1 530	1 530
		17	1 057	1 149	17	2 192	2 192
		19	1 552	1 552	19	2 274	2 274
		24	1 649	1 649	24	2 431	2 431
		27	1 823	1 823	27	2 754	2 754
		30	2 393	2 393	30	2 822	2 822
		34	2 487	2 487	34	3 154	3 154
		39	2 674	2 674	39	3 209	3 209
		43	2 881	2 881	43	3 449	3 449
		47	3 074	3 074	47	3 558	3 558
		54	3 396	3 396	54	3 938	3 938
		60	3 581	3 581	60	4 146	4 146
		67,5	3 876	3 876	67,5	4 707	4 707
		75	4 238	4 238	75	5 212	5 212
		81	4 338	4 338	81	5 692***	5 692***
		95	4 712	4 712	95	6 237***	6 237***
		108	5 273	5 273	108	6 836***	6 836***
		120	5 630	5 630	120	7 211***	7 211***
		127	6 277	6 277	127	7 520***	7 520***
		135	6 343	6 343	135	9 300****	9 300****
		150	7 330****	7 330****	146	10 321****	10 321****
		162	7 736***	7 736***	155	10 886****	10 886****
		175	8 246***	8 246***	172	11 723****	11 723****
		189	8 671***	8 671***	186	12 347****	12 347****
		200	9 065***	9 065***	200	13 076****	13 076****
		215	9 834****	9 834****	218	14 194****	14 194****
		235	11 483****	11 483****	235	15 382****	15 382****
		255	12 715****	12 715****	253	16 621****	16 621****
		270	13 415****	13 415****			
		300	14 546****	14 546****			
		325	15 464****	15 464****			
		350	16 491****	16 491****			
380	17 845****	17 845****					
410	19 237****	19 237****					
440	20 687****	20 687****					

**= sensor is not included in the price.
 ***= manufactured for double power supplies
 ****= manufactured for four power supplies

Table A

Front area m ²	Price
-0.05	309
0.06-0.10	313
0.11-0.15	329
0.16-0.20	342
0.21-0.30	360
0.31-0.50	394
0.51-0.80	442
0.81-1.00	473
1.01-1.25	499
1.26-1.50	560
1.51-2.00	641

Table D - built-in control with electronic air flow monitor

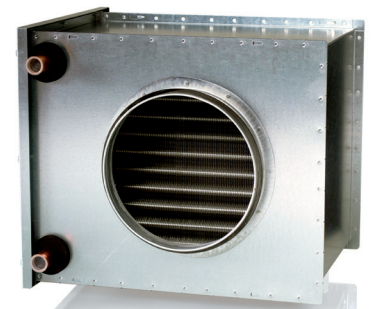
		Price / power					
		Model					
		Total power	MQEML 400V~ Regulation: TG-sensor**	MQXL 400V~ Regulation: 0...10V	MQEML 230V~ Regulation: TG-sensor**	MQXL 230V~ Regulation: 0...10V	
		kW	Price	Price	Price	Price	
400V2~	400V2~	1.5	477	560	477	560	230V~
		2	482	572	482	572	
		3	509	593	509	593	
		5	530	615	757	868	
		6	767	847	917	1 054	
400V3~	400V3~	7,5	800	877	991	1 122	230V3~
		9	985	1 060	1 036	1 170	
		13	1 030	1 104	1 523	1 523	
		15	1 129	1 222	1 630	1 630	
		17	1 156	1 248			
		19	1 650	1 650			
		24	1 750	1 750			
27	1 924	1 924					

**= sensor is not included in the price.
 ***= manufactured for double power supplies

Duct heater for hot water

Duct heater CWW for hot water

Type	Size	No. of rows	Art. No.	Price
CWW 100-2-2,5	Ø 100	2	220000	206
CWW 100-3-2,5	Ø 100	3	220033	275
CWW 125-2-2,5	Ø 125	2	220001	214
CWW 125-3-2,5	Ø 125	3	220027	310
CWW 160-2-2,5	Ø 160	2	220002	235
CWW 160-3-2,5	Ø 160	3	220028	324
CWW 200-2-2,5	Ø 200	2	220003	251
CWW 200-3-2,5	Ø 200	3	220029	435
CWW 250-2-2,5	Ø 250	2	220004	339
CWW 250-3-2,5	Ø 250	3	220030	506
CWW 315-2-2,5	Ø 315	2	220005	395
CWW 315-3-2,5	Ø 315	3	220031	613
CWW 400-2-2,5	Ø 400	2	220006	464
CWW 400-3-2,5	Ø 400	3	220037	683
CWW 500-2-2,5	Ø 500	2	220007	627



CWW

Duct heater PGV for hot water

Type	Size	No. of rows	Art. No.	Price
PGV 400x200-2-2,5	400x200	2	106140	202
PGV 400x200-4-2,5	400x200	4	106141	305
PGV 500x250-2-2,5	500x250	2	106142	253
PGV 500x250-4-2,5	500x250	4	106143	371
PGV 500x300-2-2,5	500x300	2	106144	293
PGV 500x300-4-2,5	500x300	4	106145	424
PGV 600x300-2-2,5	600x300	2	106146	318
PGV 600x300-4-2,5	600x300	4	106147	444
PGV 600x350-2-2,5	600x350	2	106148	349
PGV 600x350-4-2,5	600x350	4	106149	508
PGV 700x400-2-2,5	700x400	2	106150	403
PGV 700x400-3-2,5	700x400	3	106151	504
PGV 800x500-2-2,5	800x500	2	106152	498
PGV 800x500-3-2,5	800x500	3	106153	619
PGV 1000x500-2-2,5	1000x500	2	106154	565
PGV 1000x500-3-2,5	1000x500	3	106155	711
PGV 1200x600-2-2,5	1200x600	2	106286	713
PGV 1200x600-3-2,5	1200x600	3	106287	889



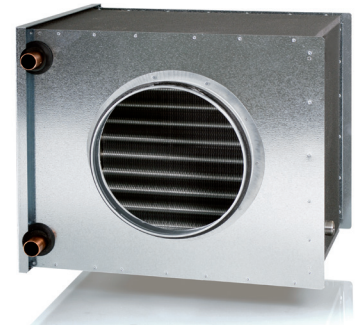
PGV

Prices for our customized rectangular duct heaters and duct coolers WHS, WCS, DXES, DXCS, SHS and condensers CS are quoted on request.

Duct cooler for cooled water / DX-coil

Duct cooler CWK for cooled water

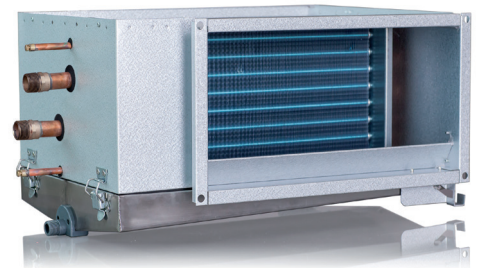
Type	Size	No. of rows	Art. No.	Price
CWK 100-3-2,5	Ø 100	3	220020	303
CWK 125-3-2,5	Ø 125	3	220021	346
CWK 160-3-2,5	Ø 160	3	220022	358
CWK 200-3-2,5	Ø 200	3	220023	484
CWK 250-3-2,5	Ø 250	3	220024	561
CWK 315-3-2,5	Ø 315	3	220025	682
CWK 400-3-2,5	Ø 400	3	220026	759



CWK

Duct cooler PGK for cooled water

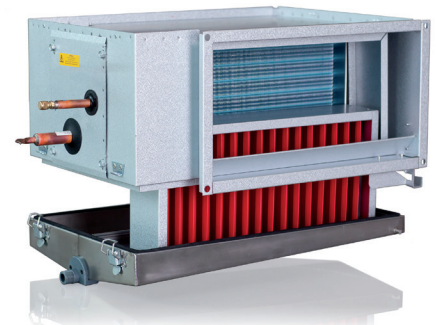
Type	Size	No. of rows	Art. No.	Price
PGK 400x200-3-2,0	400x200	3	210200	577
PGK 400x200-4-2,0	400x200	4	210400	668
PGK 500x250-3-2,0	500x250	3	210201	661
PGK 500x250-4x2,0	500x250	4	210401	760
PGK 500x300-3-2,0	500x300	3	210202	700
PGK 500x300-4-2,0	500x300	4	210402	808
PGK 600x300-3-2,0	600x300	3	210203	744
PGK 600x300-4-2,0	600x300	4	210403	877
PGK 600x350-3-2,0	600x350	3	210204	767
PGK 600x350-4-2,0	600x350	4	210404	905
PGK 700x400-3-2,0	700x400	3	210205	953
PGK 700x400-4-2,0	700x400	4	210405	1 104
PGK 800x500-3-2,0	800x500	3	210206	1 142
PGK 800x500-4-2,0	800x500	4	210406	1 346
PGK 1000x500-3-2,0	1000x500	3	210207	1 276
PGK 1000x500-4-2,0	1000x500	4	210407	1 572



PGK

Duct cooler PGDX with DX-coil

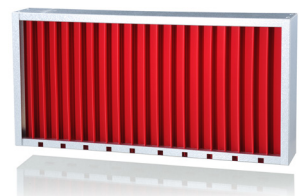
Type	Size	No. of rows	Art. No.	Price
PGDX 400x200-3-2,5	400x200	3	210240	577
PGDX 500x250-3-2,5	500x250	3	210241	661
PGDX 500x300-3-2,5	500x300	3	210242	700
PGDX 600x300-3-2,5	600x300	3	210243	744
PGDX 600x350-3-2,5	600x350	3	210244	767
PGDX 700x400-3-2,5	700x400	3	210245	917
PGDX 800x500-3-2,5	800x500	3	210246	1 047
PGDX 1000x500-3-2,5	1000x500	3	210247	1 144



PGDX with DE

Drop eliminator DE for PGK and PGDX

Type	Description	Art. No.	Price
DE 40x20	for PGK/PGDX 400x200	210210	149
DE 50x25	for PGK/PGDX 500x250	210211	160
DE 50x30	for PGK/PGDX 500x300	210212	195
DE 60x30	for PGK/PGDX 600x300	210213	251
DE 60x35	for PGK/PGDX 600x350	210214	286
DE 70x40	for PGK/PGDX 700x400	210215	313
DE 80x50	for PGK/PGDX 800x500	210216	343
DE 100x50	for PGK/PGDX 1000x500	210217	358



DE

Electric duct heaters - accessories

Regulators

Type	Description	Art. No.	Price
PULSER-M	Controller 230V~/400V2~, for wall mounting	104602	118
PULSER-ADD	Controller for additional load 230V~/400V2~	104601	101
PULSER-D	Controller 230V~/400V2~, for DIN rail mounting	104603	101
PULSER 220 X010	Controller 230V~ for input control signal 0...10V	101790	142
PULSER 380 X010	Controller 400V2~ for input control signal 0...10V	102585	142
TTC 2000	Controlller 17,0 kW, 400V 3~/10,0 kW, 230V~	106270	517
TT-S1	Ancillary board for extra load on TTC	106271	76
TTC 25	Controller, unencapsulated, 25 A	104258	453
TTC 40F	Controller, unencapsulated, 40 A	104260	575
TTC 80F	Controller, unencapsulated, 80 A	108811	810
TT-S4/D	Step controller for 0...10V control signal, 4 relays	103656	252
TT-S6/D	Step controller for 0...10V control signal, 6 relays	103659	322
SC1/D	Signal converter, 1 step	103735	121
SC2/D	Signal converter, 2 steps	104780	141

PULSER



Sensors

Type	Description	Art. No.	Price
TG-K330	Duct sensor (0-30°C)	103728	32
TG-K350	Duct sensor (20-50°C)	103729	32
TG-K370	Duct sensor (40-70°C)	103730	32
TG-K360	Duct sensor (0-60°C)	103733	32
TG-K930	Duct sensor (0-30°C), for 415-500V	103305	69
TG-K960	Duct sensor (0-60°C), for 415-500V	103306	69
TG-K3120	Duct sensor (60-120°C)	103734	128
TG-R430	Room sensor / setpoint adjuster, IP30 (0-30°C)	101307	41
TG-R530	Room sensor, IP30 (0-30°C)	101308	28
TG-R630	Room sensor, IP54 (0-30°C)	101309	51
TG-R930	Room sensor / setpoint adjuster, for 415-500V	101330	92
TBI-30	Setpoint adjuster for panel mounting	103205	36
TG-A130	Clamp on sensor for frost protection	102032	32
TG-D130	Immersion sensor 1/4" L=120, for frost protection	102031	40
TG-D230	Immersion sensor 1/4" L=220, for frost protection	102030	43

TG-K330



TG-R430



Pressure switches

Type	Description	Art. No.	Price
DTV 300, incl ANS	Pressure switch 20-300 Pa, max 1 A. 230V~	101950	53
DTV 500, incl ANS	Pressure switch 50-500 Pa, max 5 A. 230V~	101949	53
AFS 222-181	Pressure switch 10-3000 Pa, max 15 A. 230V~	101019	96
ANS	Connection set for AFS	104929	6

Thermostats

Type	Description	Art. No.	Price
C 04 C	Duct thermostat, 1 step, IP40	103210	98
R31	Room thermostat, 1 step, IP20	101010	34
TM 1-P	Electric room thermostat 230V~, wall mounted, 1 step	101006	32

Humidistats

Type	Description	Art. No.	Price
HR-1	Humidistats, room 10-95%, ±2,5% 5 A	102588	80
HMH	Humidistats, room/duct 10-100%, ±1,5% 10 A	102589	169

DTV 300



Water-based duct heaters/coolers - accessories

Regulators and sensors*

Type	Description	Art. No.	Price
AQUA 24TF	Controller, 3-way, 24V~, frost guard	102022	175
RC	Controller, 0...10V control signal, 24V~	107364	131
RC-DO	Controller, 0...10V control signal, 24V~ w. display	107365	148
OPTIGO OP5	Controller, 0...10V control signal, 24V~	107011	166
OPTIGO OP10	Controller, 0...10V control signal/3-way, 24V~	107012	247
OPTIGO OP10-230	Controller, 0...10V control signal/3-way, 230V~	107013	252
TG-K3/PT1000	Duct sensor, IP20	102051	37
TG-R5/PT1000	Room sensor, IP30	104413	38
TG-UH/PT1000	Room sensor, IP65	104414	42
TG-A1/PT1000	Clamp on sensor for frost protection	102046	31
TG-D1/PT1000	Immersion sensor, L=120, for frost protection	102047	43
TG-D2/PT1000	Immersion sensor, L=220, for frost protection	107015	46
TRAFO 60	Transformer 230V~/ 24V~ 60 VA	101051	52

*= Sensors for AQUA, see page 10

OPTIGO OP5/10



Valves and actuators (max 110°C)

Type	Description	Art. No.	Price
RVAZ4-24	Valve actuator 3 point floating, for ZTV/ZTR valves	107370	116
RVAZ4-24A	Valve actuator 0...10V, for ZTV/ZTR valves	107371	158
ZTV15-0.25	Valve, 2-way, 1/2", kvs 0.25	107372	34
ZTV15-0.4	Valve, 2-way, 1/2", kvs 0.4	107373	34
ZTV15-0.6	Valve, 2-way, 1/2", kvs 0.6	107374	34
ZTV15-1.0	Valve, 2-way, 1/2", kvs 1.0	107375	34
ZTV15-1.6	Valve, 2-way, 1/2", kvs 1.6	107376	34
ZTV20-2.0	Valve, 2-way, 3/4", kvs 2.0	107377	51
ZTV20-2.5	Valve, 2-way, 3/4", kvs 2.5	107378	51
ZTV20-4.0	Valve, 2-way, 3/4", kvs 4.0	107379	51
ZTV20-6.0	Valve, 2-way, 3/4", kvs 6.0	107380	51
ZTVB25-8.0	Valve, 2-way, 3/4", kvs 6.0	107334	124
ZTR15-0.25	Valve, 3-way, 1/2", kvs 0.25	107381	43
ZTR15-0.4	Valve, 3-way, 1/2", kvs 0.4	107382	43
ZTR15-0.6	Valve, 3-way, 1/2", kvs 0.6	107383	43
ZTR15-1.0	Valve, 3-way, 1/2", kvs 1.0	107384	43
ZTR15-1.6	Valve, 3-way, 1/2", kvs 1.6	107385	51
ZTR20-2.0	Valve, 3-way, 3/4", kvs 2.0	107386	51
ZTR20-2.5	Valve, 3-way, 3/4", kvs 2.5	107387	51
ZTR20-4.0	Valve, 3-way, 3/4", kvs 4.0	107388	51
ZTR20-6.0	Valve, 3-way, 3/4", kvs 6.0	107389	51
ZTRB25-8.0	Valve, 3-way, 1", kvs 8.0	107872	124

Actuator RVAZ4-24



Valve ZTV



Valves and actuators (max 185°C)

Type	Description	Art. No.	Price
RVAN5-24	Valve actuator 3 point floating, for MTRVS/MTRRS valves	107390	205
RVAN5-24A	Valve actuator 0...10 V, for MTRVS/MTRRS valves	107391	278
MTRVS15-0.63	Valve, 2-way, 1/2", kvs 0.63	108056	124
MTRVS15-1.0	Valve, 2-way, 1/2", kvs 1.0	108057	124
MTRVS15-1.6	Valve, 2-way, 1/2", kvs 1.6	108058	124
MTRVS15-2.1	Valve, 2-way, 1/2", kvs 2.1	108059	124
MTRVS15-2.7	Valve, 2-way, 1/2", kvs 2.7	108060	124
MTRVS20-4.2	Valve, 2-way, 3/4", kvs 4.2	108061	124
MTRVS20-5.6	Valve, 2-way, 3/4", kvs 5.6	108062	124
MTRVS25-10	Valve, 2-way, 1", kvs 10	108063	124
MTRVS32-16	Valve, 2-way, 1 1/4", kvs 16	108064	150
MTRRS15-0.63	Valve, 3-way, 1/2", kvs 0.63	107399	116
MTRRS15-1.0	Valve, 3-way, 1/2", kvs 1.0	107400	116
MTRRS15-1.6	Valve, 3-way, 1/2", kvs 1.6	107401	116
MTRRS15-2.1	Valve, 3-way, 1/2", kvs 2.1	107402	116
MTRRS15-2.7	Valve, 3-way, 1/2", kvs 2.7	107403	116
MTRRS20-4.2	Valve, 3-way, 3/4", kvs 4.2	107404	121
MTRRS20-5.6	Valve, 3-way, 3/4", kvs 5.6	107405	121
MTRRS25-10	Valve, 3-way, 1", kvs 10.0	107406	141
MTRRS32-16	Valve, 3-way, 1 1/4", kvs 16.0	107407	157

Actuator RVAN5-24A



Valve MTRRS



ROBUST - electric fan heaters for demanding environments

ROBUST F - for fire hazardous environments				
Type	W	V	Art. No.	Price
F 2	2000	230V~	401218	995
F 3	3000	230V~	401205	999
F 6	6000	400V3~	401207	1 165
F 6N	6000	230V3~	401206	1 165
F 9	9000	400V3~	401209	1 308
F 9N	9000	230V3~	401208	1 308

ROBUST C
wall mounted



ROBUST C - for corrosive environments				
Type	W	V	Art. No.	Price
C 3	3000	230V~	401200	1 439
C 6	6000	400V3~	401202	1 754
C 6N	6000	230V3~	401201	1 754
C 9	9000	400V3~	401204	1 879
C 9N	9000	230V3~	401203	1 879
C9T	9000	500V3~	401265	2 141
C15	15000	400V3~	401217	2 547

ROBUST F



ROBUST H - for high temperatures (up to 70°C)				
Type	W	V	Art. No.	Price
H 6	6000	400V3N~	401213	1 627
H 6N	6000	230V3~	401212	1 627
H 9	9000	400V3N~	401214	1 782

ROBUST V - for ships and offshore				
Type	W	V	Art. No.	Price
V3	3000	400V3~	401215	1 374
V3R	3000	230V~	401219	1 374
V3.6	3600	440V3~	401210	1 374
V5	5000	400V3~	401216	1 415
V5N	5000	230V3~	401250	1 415
V6	6000	440V3~	401211	1 415
V6T	6000	500V3~	401266	1 698

ROBUST - accessories				
Type	Description	Art. No.	Price	
RTC	Ext. control box for model C and V	402001	195	
RTC4	Ext. control box for up to 4 pcs model C and/or V	402007	604	
RTH	Ext. thermostat 0-70°C for model H	402002	170	

ROBUST V
wall mounted



EA / ENV - electric fan heater for wall-mounting

EA - electric fan heaters				
Type	W	V	Art. No.	Price
EA 6	6000	400V3N~	401501	1 060
EA 9	9000	400V3N~	401502	1 214
EA 14	14000	400V3N~	401503	1 522
EA 21	21000	400V3N~	401504	1 829
EA 30	30000	400V3N~	401505	2 216

Note: The EA fan heaters must be completed with a sensor/thermostat (not included in the price).



Fan heater EA

EA - accessories			
Type	Description	Art. No.	Price
EALH 10	Air deflector for EA 6 and EA 9	401111	122
EALH 20	Air deflector for EA 14, EA 21 and EA 30	401121	143
TG-R430	Room sensor / setpoint adjuster, IP30 (0-30°C)	101307	40
TG-R530	Room sensor, IP30 (0-30°C)	101308	27
TG-R630	Room sensor, IP54 (0-30°C)	101309	50
MCD4-1999	Room thermostat, IP21	108670	123

Fan heater ENV-L

ENV-L - electric fan heaters *				
Type	W	V	Art. No.	Price
ENV-L 2	2000	230V~	401530	465
ENV-L 3	3000	230V~	401532	465
ENV-L 5	5000	400V3N~	401534	497
ENV-L 9	9000	400V3N~	401536	588
ENV-L 15	15 000	400V3N~	401538	1 044

* Including external thermostat MCD4-1999 and wall bracket.



MCD4-1999



BX / KX - Portable electric fan heaters

BX - electric fan heaters				
Type	W	V	Art. No.	Price
BX 2E	2000	230V~	451200	263
BX 3E	3000	230V~	451210	288
BX 5E	5000	400V3N~	451220	354
BX 9SE	9000	400V3~	451250	441
BX 9AE	9000	400V3~	451260	484
BX 15E	15000	400V3~	451280	719
BX 20E	20000	400V3N~	451380	1 281
BX 30E	30000	400V3N~	451390	1 424



Fan heater BX

KX - electric fan heater				
Type	W	V	Art. No.	Price
KX 2	2000	230V~	451303	148



Fan heater KX 2

AW C/D/Ex/H - Fan heaters for demanding environments

AW C/D/EX/H			
Type	Description	Art. No	Price
AW C22	For corrosive environments coil in EN 1.4404	421400	5 642
AW C42	For corrosive environments coil in EN 1.4404	421410	7 331
AW C22E	For corrosive environments epoxy coated coil	421406	2 821
AW C42E	For corrosive environments epoxy coated coil	421416	3 670
AW D22	For dusty environments	421401	2 954
AW D42	For dusty environments	421411	3 512
AW DX22CE	For corrosive environments epoxy coated coil	421407	3 240
AW Ex22	For hazardous areas incl. motor protection U-EK230E	421403	3 276
AW Ex42	For hazardous areas incl. motor protection U-EK230E	421413	3 681
AW H22	For high ambient temperature	421404	1 673
AW H42	For high ambient temperature	421414	2 301

AW C/D/Ex/H - accessories			
Type	Description	Art. No	Price
AWST35	Thermostat, 0-35 °C, IP65	422092	170
AWST70	Thermostat, 0-70°C, IP65	422093	170
AWPFC 22	Filter for AW C 22/D 22	422094	124
AWPFC 42	Filter for AW C 42/D 42	422095	103
AWPFH 22	Filter for AW H 22/CE22	422096	124
AWPFH 42	Filter for AW H 42/CE42	422097	103
U-EK	Housing for U-EK 230E	108093	56
VM 8622-3,6	Solenoid Valve, EN 1.4401	108675	500
VM 8622-8,4	Solenoid Valve, EN 1.4401	108676	675
VM 8631-8,4	Solenoid Valve in Brass	108677	267
TRK	Thermostat, EX	108698	1 338
RTRD 2	Transformer, 5 steps, 400V3~	108699	405

AW - Wall-mounted fan heaters

AW 12		
Type	Art. No	Price
AW 12s*	421300	534
AW 12a*	421301	800

AW 22		
Type	Art. No	Price
AW 22s*	421303	632
AW 22a*	421304	895

AW 42		
Type	Art. No	Price
AW 42s*	421306	850
AW 42a*	421307	1 169

AW 62		
Type	Art. No	Price
AW 62s*	421309	1 176
AW 62a*	421310	1 433

* Wall brackets are not included in the price.



AW

AW 12 - accessories			
Type	Description	Art. No	Price
AWV 12	Wall brackets, pair	422045	53
AWT 12-22	Ceiling brackets, pair	422050	32
AWLH 12	Air deflector	422055	85
AWPF 12	Filter	422064	84
AWLA 12	Induction louvre	422080	166

AW 22 - accessories			
Type	Description	Art. No	Price
AWV 22	Wall brackets, pair	422046	53
AWT 12-22	Ceiling brackets, pair	422050	32
AWLH 22	Air deflector	422056	85
AWPF 22	Filter	422065	84
AWLA 22	Induction louvre	422081	166

AW 42 - accessories			
Type	Description	Art. No	Price
AWV 42	Wall brackets, pair	422047	60
AWT 42	Ceiling brackets, pair	422051	37
AWLH 42	Air deflector	422057	128
AWPF 42	Filter	422066	103
AWLA 42	Induction louvre	422082	213

AW 62 - accessories			
Type	Description	Art. No	Price
AWV 62	Wall brackets, pair	422048	75
AWT 62	Ceiling brackets, pair	422052	37
AWLH 62	Air deflector	422058	171
AWPF 62	Filter	422067	138
AWLA 62	Induction louvre	422083	249

CAW - Ceiling-mounted fan heater for hot water

CAW 11 - 41		
Type	Art. No	Price
CAW 11s	421320	832
CAW 11a	421321	1 218
CAW 21s	421322	1 047
CAW 21a	421323	1 391
CAW 41s	421324	1 395
CAW 41a	421325	1 722



CAW

CAW 11-41 - accessories			
Type	Description	Art. No	Price
CAWF11	Panel filter for CAW11	421053	84
CAWE11	Extension sleeve for CAW11	422025	82
CAWL11	Air deflector for CAW11	422060	122
CAWF21	Panel filter for CAW21	421054	90
CAWE21	Extension sleeve for CAW21	422026	93
CAWL21	Air deflector for CAW21	422061	127
CAWF41	Panel filter for CAW41	421055	103
CAWE41	Extension sleeve for CAW41	422027	134
CAWL41	Air deflector for CAW41	422062	138

Accessories for AW and CAW

Sensors for CAW-a, AW-a and AW-af			
Type	Description	Art. No	Price
TG-R430	Room sensor / setpoint adjuster, IP30 (0-30°C)	101307	41
TG-R530	Room sensor, IP30 (0-30°C)	101308	28
TG-R630	Room sensor, IP54 (0-30°C)	101309	51



AWC

Switches and thermostats for CAW-s and AW			
Type	Description	Art. No	Price
AWC	Fan speed switch, IP65	101267	66
CAWC	Fan speed switch, IP65	101268	66
SR121/1	Room thermostat, IP54	101033	161
R31	Room thermostat, IP20	101010	34



AWTV

Valve with actuators for CAW-s and AW-s			
Type	Description	Art.No	Price
AWTV 12-22	for CAW-s 11, CAW-s 21, AW-s 12 and AW-s 22. IP44	422084	112
AWTV 42-62	for CAW-s 41, AW-s 42 and AW-s 62. IP44	422085	142

AW DX/K - Fan heater/cooler, direct expansion/cooled water

AW DX			
Type	Description	Art. No	Price
AW DX22	Cooling / heating, DX	421402	2 030
AW DX42	Cooling / heating, DX	421412	2 694

AW K			
Type	Description	Art. No	Price
AW K22	Cooling heating, water	421405	1 958
AW K42	Cooling heating, water	421415	2 624

AW DX/K - accessories			
Type	Description	Art. No	Price
AWLH DX22/K22	Air deflector	422053	128
AWLH DX42/K42	Air deflector	422054	171
SR121/1	Room thermostat, IP54	101033	161
R31	Room thermostat, IP20	101010	34
AWTVK	Valve + actuators for AW K, IP44	422086	142



AW DX

LAF - Dehumidifier

Dehumidifier LAF 12/30/48/50/100

Type	V	A (fuse)	Art. No.	Price
LAF 12	230V~	10	602040	262
LAF 30	230V~	10	602030	695
LAF 50S	230V~	10	601050	1 945
LAF 50ES	230V~	10	601051	1 985
LAF 50E2S	230V~	16	601052	2 080
LAF 100	230V~	10	601060	2 445
LAF 100E	230V~	16	601061	2 485



LAF 50 / LAF 100



Dehumidifier LAF 30/50/100 - accessories

Type	Description	Art. No.	Price
LAF-HY	Humidistats with cable connection	602010	199
LAF-W30	Wall brackets for LAF 30	602017	99
LAF-W50	Wall brackets for LAF 50	602011	99
LAF-W100	Wall brackets for LAF 100	602012	115
LAF-P30	Collecting bowl with pump for LAF 30	602031	200
LAF-P50	Collecting bowl with pump for LAF 50	602013	373
LAF-P100	Collecting bowl with pump for LAF 100	602014	390
—	Running time meter, factory mounted		90

LAF 12



LAF 30



LAF-P



Terms of sales

General conditions:	Orgalime, S 2012.
Terms of delivery:	Incoterms EXW Hässleholm, Sweden, packing included.
Terms of payment:	Payment in advance. Currency, EUR.
Guarantee:	3 years from date of delivery. The guarantee includes spare parts only. Other costs such as labour costs are not included.
Changes:	We reserve us from typographical errors and the right to change prices and conditions as well as the technical specifications of the products without previous announcement.
Packing and packing waste:	The customer in the recipient country is responsible for the recycling of packaging and disposal of old electrical equipment in accordance with Directive 94/62/EC- Packing and Packing Waste and Directive 2002/96/EC Waste Electrical and Electronic Equipment (WEEE).

Delivered products remain in our possession until full payment has been settled.



VEAB Heat Tech AB
Box 265
SE-281 23 Hässleholm
SWEDEN

Visitors address
Stattenavägen 50
Delivery address
Ängdalavägen 4
281 33 Hässleholm

Org.No.
556138-3166
VAT.No.
SE556138316601

Postal Cheque Service
48 51 08-5
Bank Transfer Service
926-0365

Fax
Nat 0451-410 80
Int +46 451 410 80
veab@veab.com

Phone
Nat 0451-485 00
Int +46 451 485 00
www.veab.com